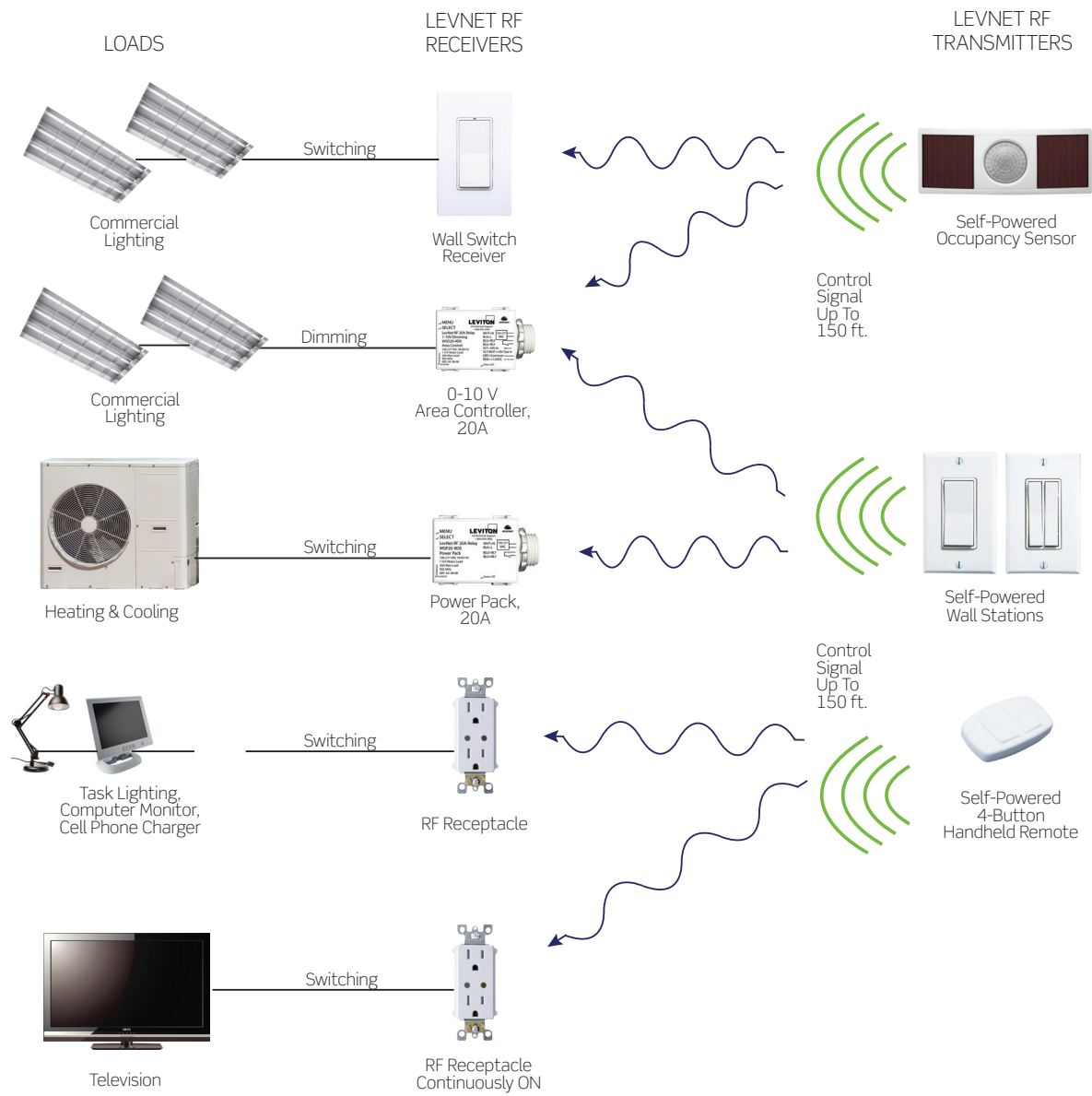


## HOW TO PUT IT ALL TOGETHER

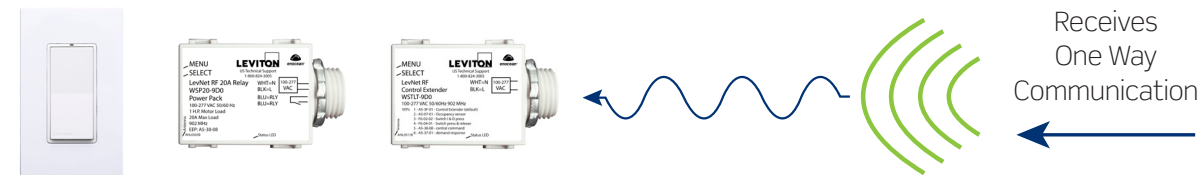
TIP: A good way to visualize your wireless system is to imagine that the "wires" connecting each device are invisible wires or "unique addresses."



**STEP 1** Determine what **LOADS** you want to control — lighting, HVAC, lamp, TV, etc.

**STEP 2** Pick the appropriate **RF RECEIVER**

### LevNet RF Wireless/Wired-In Receivers



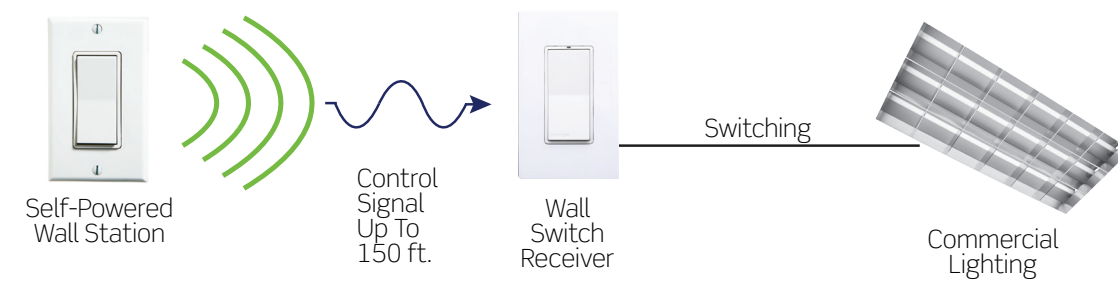
**STEP 3** Pick the appropriate **Wireless Self-Powered RF TRANSMITTER (sensor or switch)**

### LevNet RF Self-Powered Wireless Transmitters

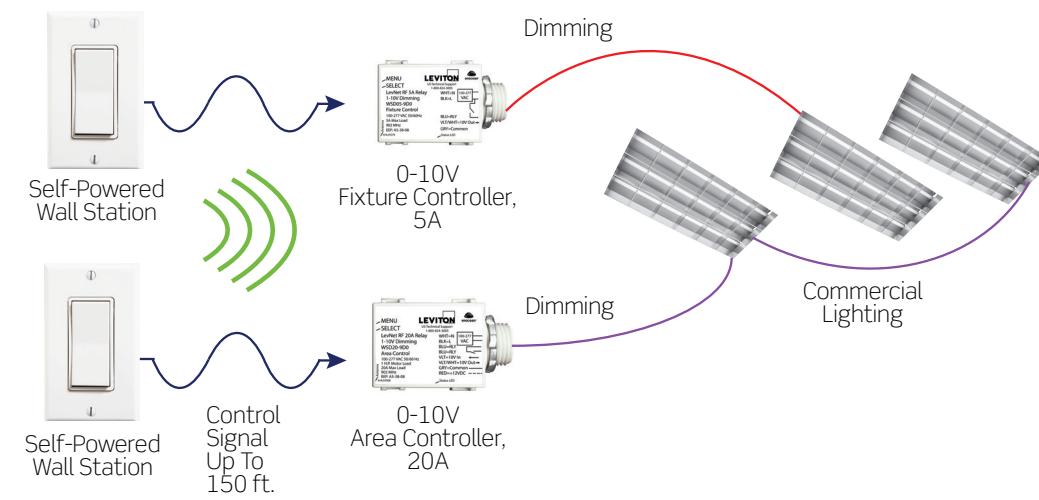


## BASIC LEVNET RF SOLUTIONS

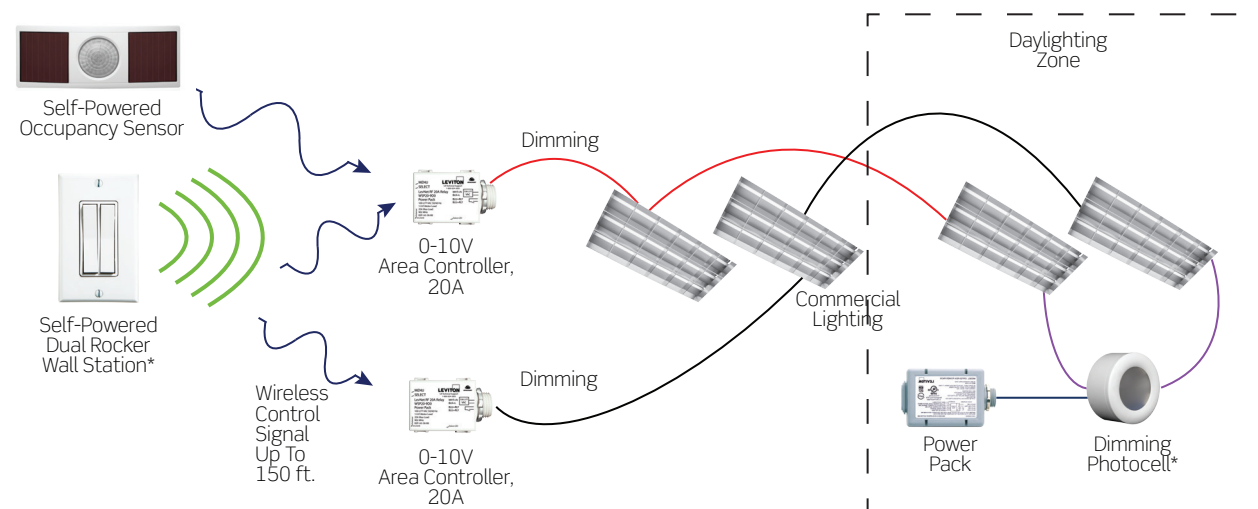
### 3-Way or Multi-Location Switching



### 1-10V Dimming

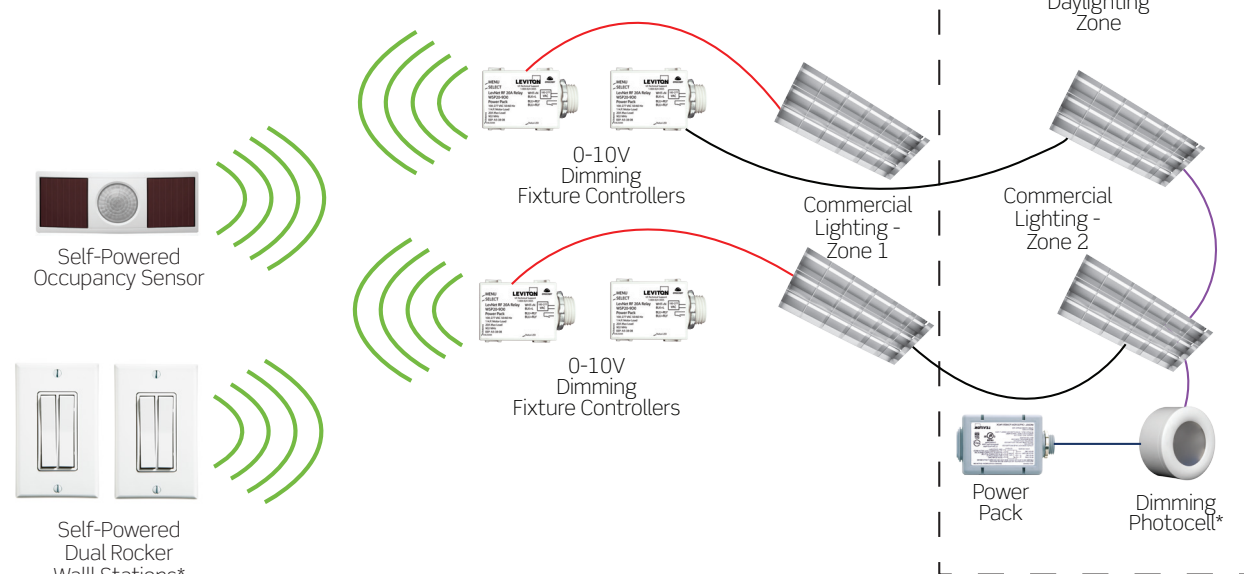


### Dimming with Occupancy and Daylighting - Hybrid Area Control



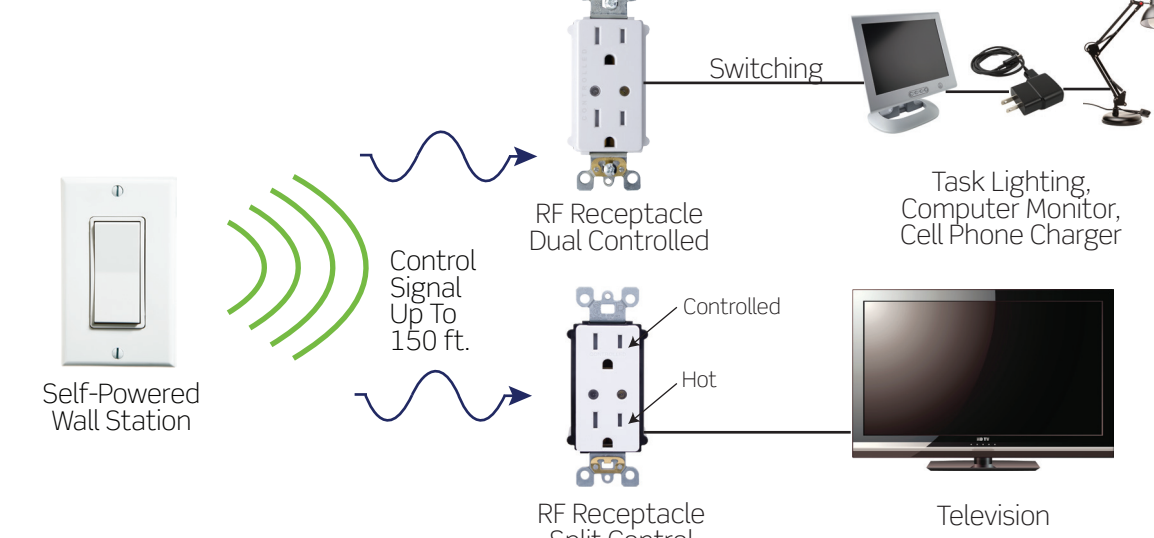
\*Priority given to the lowest daylighting level

### Dimming with Daylighting - Hybrid Individual Fixture Control

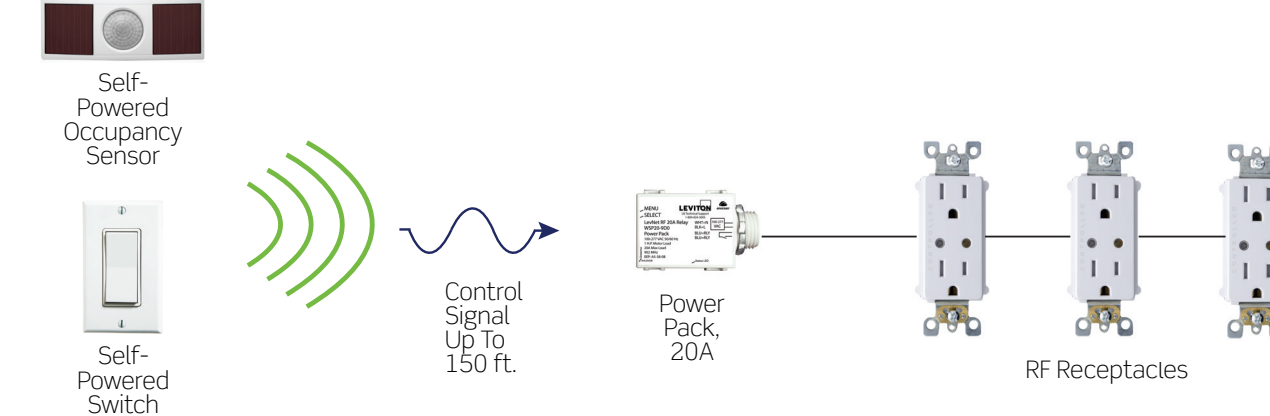


\*Priority given to lowest daylighting level

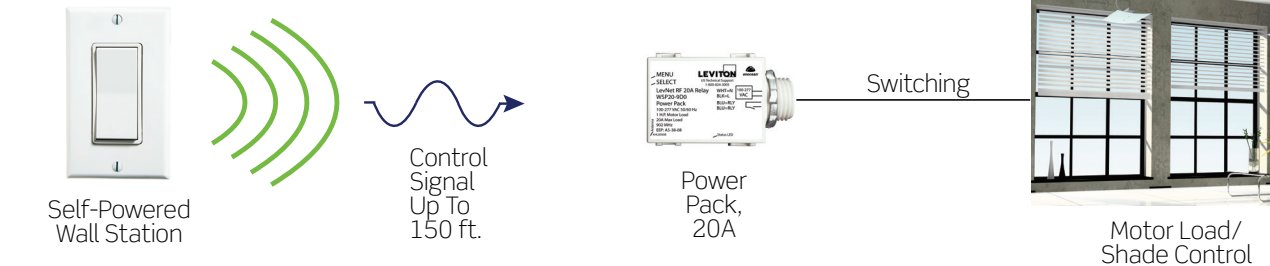
### Plug Load Control Options



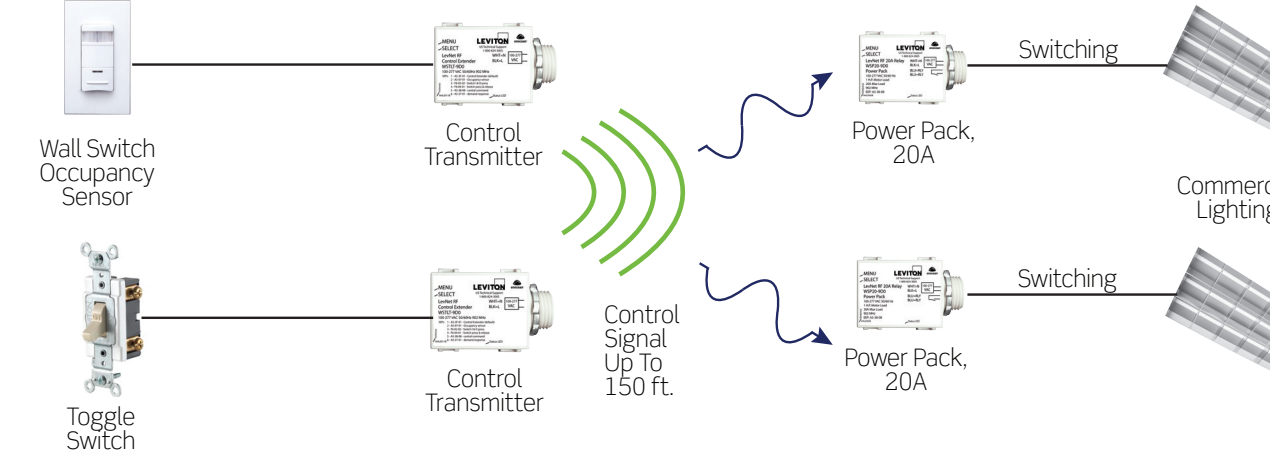
### Energy Code Compliant Plug Load Control



### Motor Load Control



### Transmitter Hybrid Control

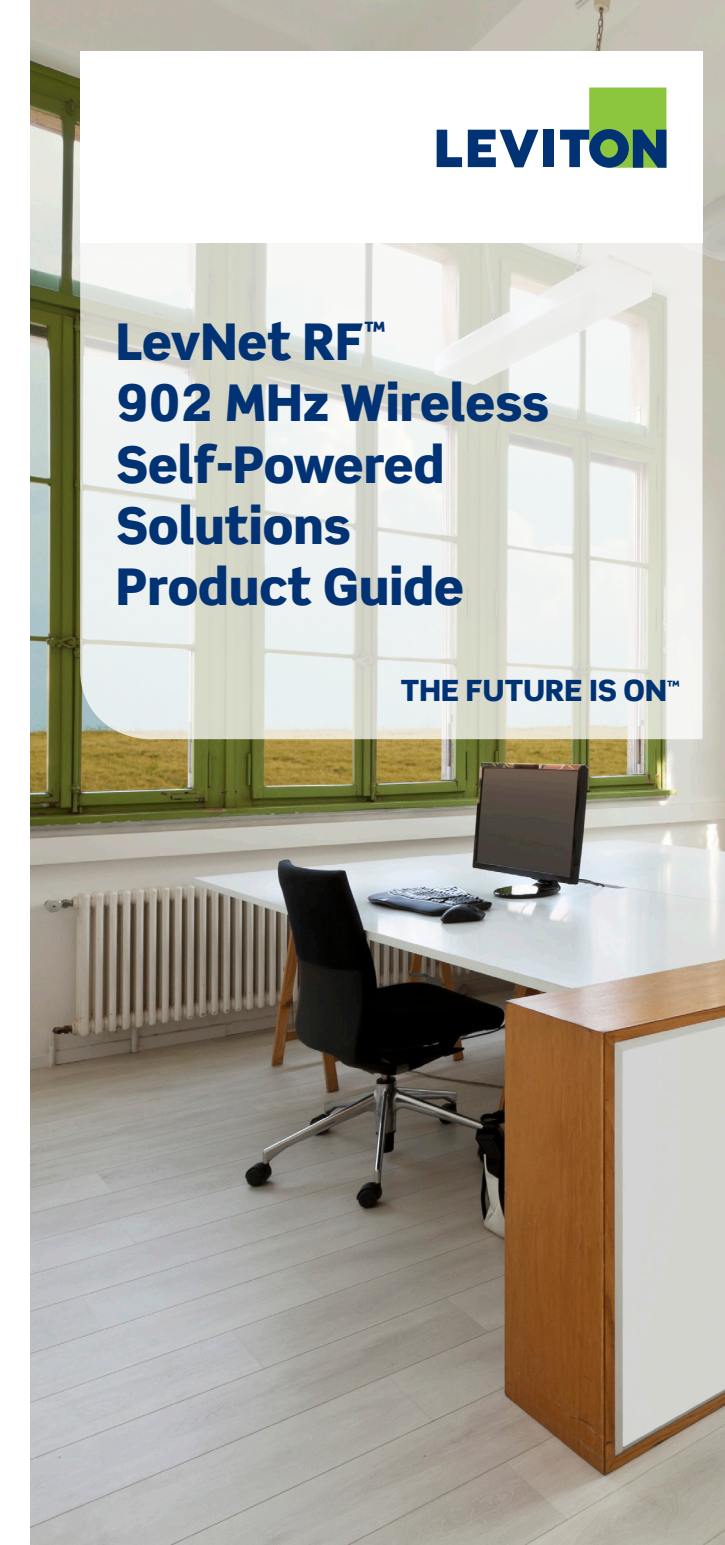


**LEVITON**

- Dedicated technical support via phone at 1-800-954-6004
- Factory commissioning service
- Field service engineers for top-level support
- Lighting control specialists at your disposal
- Find more exclusive, no-cost design tools at [www.leviton.com/lesdesign](http://www.leviton.com/lesdesign)
- Go to [www.leviton.com/asesp](http://www.leviton.com/asesp) — allows you to quickly and simply design, specify and enter orders
- **ASAP Lighting Design Software** — point-and-click software go to [www.leviton.com/ezlearn](http://www.leviton.com/ezlearn)
- **ez-learn™** — get Leviton smart from the comfort of your home go to [portableleviton.com](http://portableleviton.com)
- **Occupancy Sensor Layout Services** — have a team of experts create occupancy sensor layouts directly on your CAD drawings, complete with a list of equipment at no cost — submit package — go to [www.leviton.com/dollarsensors](http://www.leviton.com/dollarsensors)
- **Dollars & Sensors® Online Energy Audit Tool** — makes energy audits easier than ever — use your smart device (Android, Apple, Windows or BlackBerry) to enter audit information and your desk-top to generate ROI reports, analyses, bill of materials, and a top-down energy audit report — go to [www.leviton.com/dollarsensors](http://www.leviton.com/dollarsensors)

**EXCLUSIVE WEALTH OF RESOURCES:**  
 Dollars & Sensors® Online Energy Audit Tool — makes energy audits easier than ever — use your smart device (Android, Apple, Windows or BlackBerry) to enter audit information and your desk-top to generate ROI reports, analyses, bill of materials, and a top-down energy audit report — go to [www.leviton.com/dollarsensors](http://www.leviton.com/dollarsensors)

**SERVICE AND SUPPORT DURING EVERY STEP OF THE PROCESS:**  
 Only Leviton has the service and support to help you create a lighting control system that does exactly what you want it to do while saving electricity, meeting codes and standards, and even garnering rebates.



Contact your Leviton representative for additional smart energy saving solutions to expand and upgrade your system.

# LEVNET RF 902 MHZ WIRELESS SELF-POWERED SOLUTIONS



## SELF-POWERED + RADIO FREQUENCY = TRUE WIRELESS

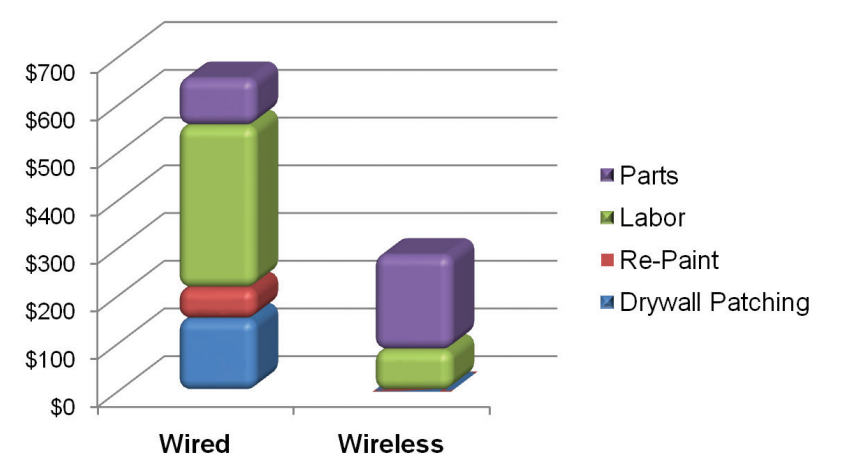
Self-powered LevNet RF transmitters operate indefinitely without external power or batteries. Transmitters communicate with LevNet RF receivers via radio frequency. Operating in the 902 MHz band provides minimal competing traffic, enhanced reliability and greater transmission range over other wireless technologies.

## GREEN SOLUTIONS

- Energy Savings**
- Lowest power consumption on wireless receivers at less than one Watt per device
  - Place virtually anywhere and control any compatible wireless device within range
  - Self-powered and self-charging, uses zero external power consumption to operate
- Material Savings**
- Reduce materials and time spent on installation with no new wires to run
  - Reduce monthly testing and maintenance costs

\* Leviton is part of the EnOcean Alliance. LevNet RF Solutions are compatible with other EnOcean Alliance wireless devices.

## WIRED VS. WIRELESS COSTS



## PUTTING TOGETHER A LEVNET RF 902 MHZ SYSTEM

- STEP 1** Determine what **LOADS** you want to control - lighting, HVAC, lamp, TV, etc.
- STEP 2** Pick the appropriate **RF RECEIVER** mounting style
- STEP 3** Pick the appropriate wireless self-powered **RF TRANSMITTER** (sensor or switch)
- STEP 4** **PAIR** the devices to communicate with each other

LevNet RF Self-Powered Wireless Solutions	
<b>Frequency</b>	902 MHz
<b>Range</b>	50-150 feet (Design to 75 feet)
<b>Listings</b>	FCC Certified for Wireless Communication (U.S.), I.C. Certified (Canada)
<b>Warranty</b>	Limited 5-year

## RECEIVERS

### WALL SWITCH

ADVANCED WALL SWITCH RECEIVERS with Color Change Kit WSS20-N9N   WSS20-G9N Use for larger rooms with multiple loads. Pairing for rocker, momentary and toggle.	
<b>Input Voltage</b>	120-230-277VAC
<b>Power Consumption</b>	120V < 1/2 Watt; 277V < 2/3 Watt
<b>Memory</b>	Stores up to 20 Transmitter IDs
<b>Button Pairing Modes</b>	Rocker, Momentary and Toggle
<b>Vacancy Confirmation</b>	30 seconds
<b>Mode</b>	Presentation/Viewing
<b>Time Delay</b>	2 min (test); 10, 20, 30 min
<b>Load Rating</b>	<b>General Duty:</b> 10A <b>LED:</b> 400W @ 120V <b>Incandescent:</b> 800W @ 120V <b>Fluorescent Ballasts:</b> 1200VA @ 120V, 2700VA @ 277V <b>Motor:</b> 1/4 HP Load @ 120V <b>For non-neutral models:</b> 25W minimum load required
<b>Additional Listings</b>	ETL/cETL: UL508, can be used to comply with IECC, ASHRAE 90.1, and 2016 Title 24, Part 6 area controls and shut-off controls requirements, CAN/CSA C22.2 #14

All WSS20 models ship with a Color Change Kit which includes a White, Ivory and Light Almond faceplate. Gray and Ebony faceplates available in quantities of 25.

## PRODUCT COMPATIBILITY MATRIX

	SENSORS		SWITCHES			CONTROL EXTENDER
	WSC12-M9N	WSWDR-H9W	WSS0S-S9	WSS0S-D9	WSS0S-R9W	WSTLT-9D0
<b>Wall Switch Receivers</b>	X	X	X	X	X	X
<b>Relay Receivers</b>	X	X	X	X	X	X
<b>RF Receptacles</b>	X	X	X	X	X	X
<b>Dimming Controllers</b>	X	X	X	X	X	—

X - Indicates compatibility

## DID YOU KNOW?

- LevNet RF wireless self-powered sensors and switches use **zero power for zero utility cost.**
- In standby power consumption alone, LevNet RF **saves 70% over the competition** month after month after the install. LevNet RF uses less than one Watt in standby mode to operate a receiver.
- LevNet RF offers a **no-neutral design for ALL retrofit installations.**
- You receive **LEED points for wireless control AND no batteries** when you install LevNet RF wireless self-powered sensors.

## RECEIVERS

### POWER PACK

LINE VOLTAGE POWER PACK WSP20	
<b>Memory</b>	Stores up to 20 Transmitter IDs
<b>Power Supply Input</b>	100-277VAC, 50/60 Hz
<b>Max Loads/Contact Rating</b>	<b>General Duty:</b> 20A <b>Tungsten (Incandescent):</b> 20A <b>Fluorescent Ballast:</b> 20A <b>Motor Load:</b> 1HP <b>Power Up State:</b> Selectable N.O. or N.C.
<b>Output Channels</b>	1 FORM A Latching Relay, N.O. or N.C.
<b>Time Delay</b>	15 min
<b>Additional Listings</b>	ETL (U.S.) UL 60730, UL 2043 Plenum rating, ETL (Canada): CSA C22.2 #1405, CE (International): IEC 60730



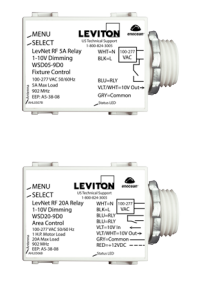
### RF RECEPTACLE

SPLIT DUPLEX RECEIVER WSG15-S9W		DUPLEX RECEIVER WSG15-D9W	
<b>Power Supply</b>	125VAC, 60Hz, 15A		
<b>Power Consumption</b>	120VAC @ 10mA AC (320mW typical)		
<b>Switched Side: Max Loads/Constant Ratings</b>	<b>General Use/Resistive:</b> 15A <b>Incandescent:</b> 1800W <b>Inductive:</b> 1800VA 1/2HP, 120VAC		
<b>Controlled</b>	Single (Top)	Dual	
<b>Listings</b>	Can be used to comply with IECC, ASHRAE 90.1, and 2016 Title 24, Part 6 receptacle control requirements, TR Receptacle		



### 1-10V DIMMING CONTROLLERS

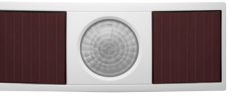
5A FIXTURE CONTROLLER WSD05-9D0		20A AREA CONTROLLER WSD20-9D0	
<b>Memory</b>	Stores up to 20 Transmitter IDs		
<b>Power Supply Input Rating</b>	100-277VAC, 50/60 Hz		
<b>Output Rating</b>	—	10mA source	
<b>Input Channels</b>	—	1 - 1-10V input signal 1 mA source	
<b>Output Channels</b>	1 - latching FORM A relay, selectable N.O. or N.C. power up state 1 - 1-10V output signal (sink 100mA, source 1mA)		
<b>Load Rating</b>	5A	20A	
<b>Additional Listings</b>	UL 60730 and UL 2043, C-ETL: CSAc22.2#14-05, can be used to comply with IECC, ASHRAE 90.1 and 2016 Title 24, Part 6 0-10V dimming, daylight harvesting, demand response, switching and occupancy sensing requirements		



## TRANSMITTERS

### SENSORS

	CEILING MOUNT OCCUPANCY SENSOR WSC12-M9N	WALL MOUNT OCCUPANCY SENSOR WSWDR-H9W
<b>Coverage</b>	1,200 SF	1600/2200 SF
<b>Power Consumption</b>	Zero (Self-Powered)	
<b>Transmission</b>	60 seconds (+/- 10 sec)	30 minutes @ 0.5FC (5 LUX); 15 minutes @ 1.0FC (10 LUX); 30 seconds @ 20FC (200 LUX)
<b>Minimum Light Required</b>	5FC (50 LUX for auto-OFF only)	1.5FC (15 LUX)
<b>Minimum Charge Time to Begin Operation</b>	1 minute @ 20FC (200 LUX)	1 minute @ 1.5FC (15 LUX); 5 seconds @ 20FC (200 LUX)
<b>Maintain Charge Time</b>	3 hours per 24 hours @ 20FC (200 LUX)	
<b>Operating Life at Full Charge</b>	80 hours	48 hours
<b>Additional Listings</b>	Can be used to comply with IECC, ASHRAE 90.1, and 2016 Title 24, Part 6 occupancy sensing requirements, FCC Certified for Wireless Communication (U.S.), I.C. Certified (Canada)	



### WALL STATIONS

	SINGLE ROCKER DECORA® WALL STATION WSS0S-S9x	DUAL ROCKER DECORA® WALL STATION* WSS0S-D9x	HANDHELD 4-BUTTON REMOTE WSS0S-R9W
<b>Buttons</b>	2 Buttons (1 Rocker)	4 Buttons (2 Rockers)	4 Buttons (2 Rockers)
<b>Output Channels</b>	Only limited by number of Receivers in range		
<b>Addressing</b>	Factory set unique ID (1 of 4 billion)		



\* Available in White (-W), Ivory (-I), Light Almond (-T), Gray (-G) and Ebony (-E).  
Note: Wall Stations are both switches and dimmers depending on the receiver they are paired to - see the Wall Station data sheet for details.

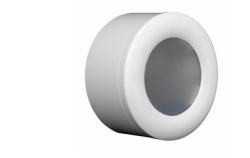
### CONTROL EXTENDER

CONTROL TRANSMITTER WSTLT-9D0 Communicates with receivers that control virtually any ON/OFF device	
<b>Power Supply Input</b>	100-277VAC, 50/60 Hz
<b>Addressing</b>	Factory set unique ID (1 of 4 billion)
<b>Additional Listings</b>	UL 60730 (Safety), UL 2043 (Plenum), CSA C22.2#14-05 (Safety), CE-IEC 60730, can be used to comply with IECC, ASHRAE 90.1 and 2016 Title 24, Part 6 occupancy/vacancy sensing, daylight harvesting, partial-ON, partial-OFF, demand response and receptacle control requirements



## ADD DAYLIGHTING\*

	DIMMING PHOTOCELL ODCOP-D0W	POWER PACK OPP20-RD4
<b>Power Supply Input</b>	12-24VDC	120-230-277VAC, 50/60 Hz
<b>Additional Listings</b>	Can be used to comply with IECC, ASHRAE 90.1 and Title 24, Part 6 0-10V dimming and daylight harvesting requirements and NYC LL48, UL 916 listed, FCC certified	Can be used to comply with NY LL48, IECC, ASHRAE 90.1 and Title 24, Part 6 daylight harvesting, demand response, bi-level switching and receptacle control requirements



\*To add daylighting to a LevNet RF System, the solution must include a dimming photocell and power pack