

Changing the VerifEye™ Series 3500 Meter Modbus and IP Addresses

Product: VerifEye Series 3500 Meter

Article ID: 20140616-BW

Date: June 16, 2014

Summary: This article describes the process for changing the VerifEye Series 3500 Modbus and IP Addresses via the FieldServer App.

Instructions

1. Download the App - Go to the Field Server website (www.fieldserver.com) and click on the Support tab. Click on the Downloads menu and choose the FieldServer-Toolbox file to install the program onto your computer. **You will need to turn off your Windows firewall to use this app.**

The screenshot shows the 'SUPPORT' section of the FieldServer website. On the left is a navigation menu with links like 'Literature/Manuals Download', 'Profiles', 'Advanced Functions', etc. The main content area is titled 'Utility software downloads' and contains a list of software packages. A table lists these packages with columns for 'Software', 'Size', and 'Description'. The 'FieldServer-Toolbox.zip' entry is highlighted, and a red arrow points to it from the text above. Below the table, there is a note stating that the Utility.zip has been replaced by the FieldServer-Toolbox.zip.

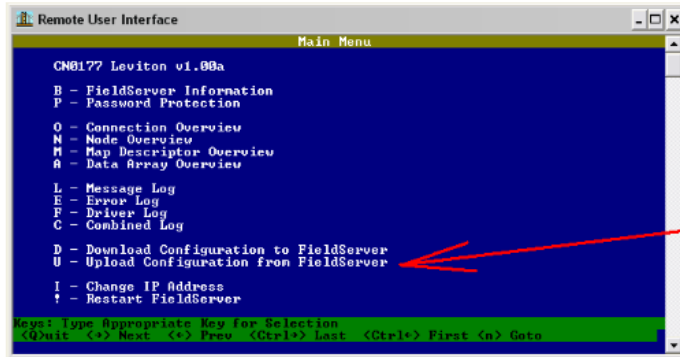
Software	Size	Description
All FieldServers		
FieldServer-Toolbox.zip	10Mb	The FieldServer-Toolbox zip contains all the files you need to setup your gateway for diagnostics, set IP address, set time, monitor the units on the network and their status and manage configuration.

2. Connect Series 3500 Meter – Connect the VerifEye Series 3500 Meter via a switch or directly to your laptop. Allow the meter to power up (about 20 seconds) and open and run the Remote User Interface app.

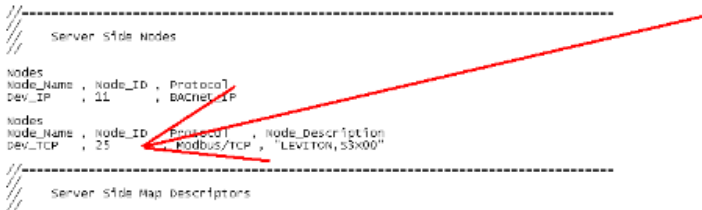


When you start the application, it will ask if you want to change the time. The time can be changed; however it is not necessary as the time reference comes from the Energy Monitoring Hub (EMH).

Next, select Upload Configuration (U) from FieldServer on the menu – see screen cap below.



3. Configure - After selecting Upload Configuration, the program will give you the option to open the file with Slick, Excel or Notepad. Choose Notepad.



In Notepad, change the address and hit Save. Hit ESC to go back to the main screen and choose Download Configuration to Field Server (D). After completing this step, you can exit out of the app.

Note: Before adding to EMH, you must first power cycle the Series 3500 Meter.

Next, add the VerifEye Series 3500 Meter with “Add” option using the device IP and Modbus addresses set in the previous step.

SPECIAL NOTE: This technical article primarily covers changing the Modbus address. Changing the IP address is easier to do and can be done from the main screen of the app (see screen shots below).

