

Wall Station Dimming Room Controller Dimmers & Switch

Cat. No. DL057-D0Z, Ratings: 120-277V AC, 0-10V
 Cat. No. DL057-30Z, Ratings: 347V AC, 0-10V
 Cat. No. DL05S-D0Z, Ratings: 120-277V AC, Switch



PK-A3300-10-00-2C

WARNINGS:

- **TO AVOID FIRE, SHOCK, OR DEATH; TURN OFF POWER AT CIRCUIT BREAKER OR FUSE AND TEST THAT POWER IS OFF BEFORE WIRING!**
- To be installed and/or used in accordance with appropriate electrical codes and regulations.
- If you are unsure about any part of these instructions, consult an electrician.

CAUTIONS:

- Use this device with **copper or copper-clad wire only**.
- For indoor applications only.
- To avoid damage to the product, **DO NOT** use disinfecting products, including foggers, sprays or other types of atomized cleaning agents.
- **DO NOT** spray liquid onto the product.
- To clean, use a damp cloth with mild soap.
- **SAVE THESE INSTRUCTIONS.**

INSTALLATION INSTRUCTIONS

ENGLISH

Product Description

The wireless DL057 Wall Station Dimming Room Controller and DL05S Wall Station Switching Room Controller are designed to be used to coordinate and control compatible ZigBee-enabled lamps, fixtures, load controllers and wireless sensors within a room. The Wall Station Room Controllers can directly control lighting loads and/or be expanded with other wireless devices. It provides all energy management functionality as required by code and as desired by the user. All aspects of the system can be configured to meet the specific needs of the end user and their application. All configuration is made using the Lumina™ RF SA app from your smartphone or other Bluetooth™ enabled Android™ or iOS™ device.

Before Installation

- Range up to 75 feet between wireless devices.
- Installs into any single gang device back-box.
- Supports multi-gang installations.
- Multiple devices may be used within the same room for control from multiple locations or to control multiple loads.
- Each room requires at least one room controller.
- Requires Decora® faceplate, sold separately.
- DL057 uses 0-10V DC low-voltage control wires which may be installed using Class 1 or Class 2.

INSTALLATION NOTE (DL057): 0-10V Control Wiring - Connect the Violet wire to the + 0-10V line and the Pink wire to the 0-10V common using Class 1 or Class 2 wiring methods as indicated in these instructions, ballast/fixture/driver instructions or ballast/fixture/driver label markings. Observe all requirements of any authority having jurisdiction with respect to wire type, sleeving, isolation methods, and the like.

NOTE: Depending on date of manufacture, the pink 0-10V wire may be gray.

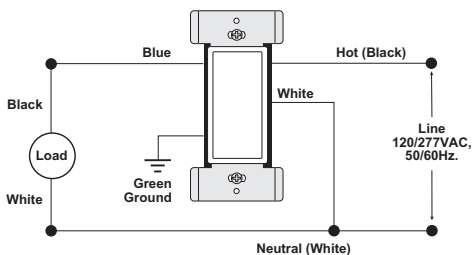
Installation

WARNING: TO AVOID FIRE, SHOCK, OR DEATH; TURN OFF POWER AT CIRCUIT BREAKER OR FUSE AND TEST THAT POWER IS OFF BEFORE WIRING!

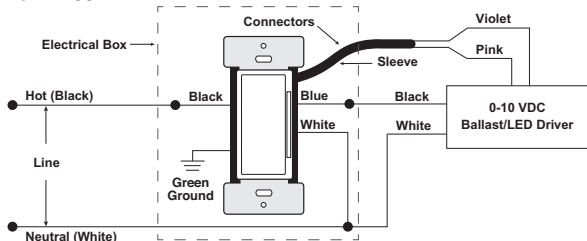
When room controller is also powering load:

1. Strip 3/4 in. and connect as per wiring diagram. Ensure wires are firmly attached and there is no exposed copper.

Switch DL05S

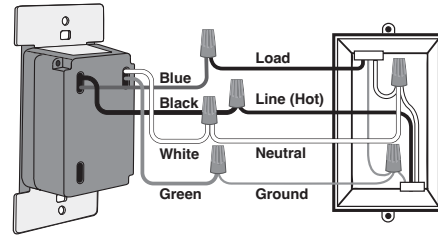


Dimmer DL057

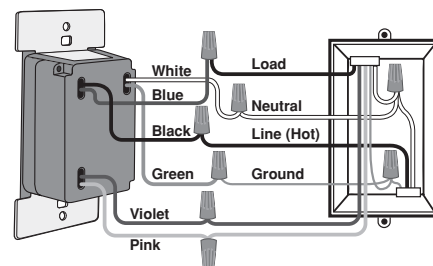


2. Gently place the wires and your device into the wall box and attach with screws provided.

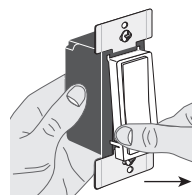
Switch DL05S



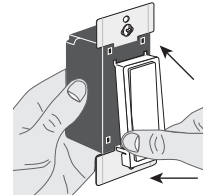
Dimmer DL057



3. Restore power and test ON/OFF operation. Locator light should be ON when switch power is turned OFF.
4. If desired, change faceplate color.
5. Install Decora wallplate.



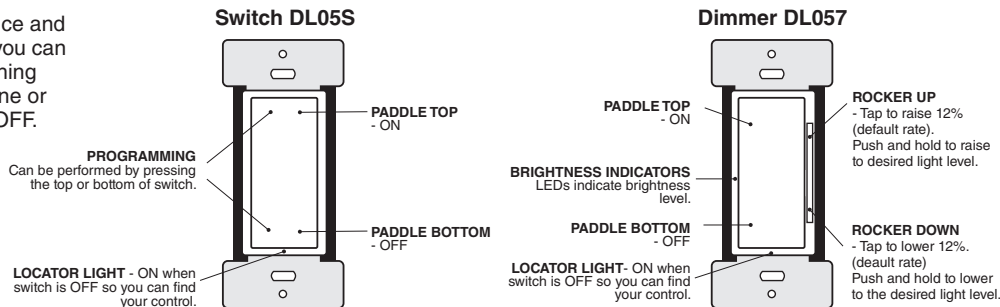
To release, push sides.



Line up and press in to attach.

WEB VERSION

6. Using the Lumina™ RF SA app, set up device and configure your system. Using your system, you can program different functionality, such as pushing the top of the paddle for a presentation scene or pushing the bottom of the paddle to turn it OFF.



Configuration and Programming

- System Configuration is performed using the Lumina™ RF SA application, downloadable from Google Play™ or the App Store™, using any Bluetooth enabled Android or iOS Device. Use the application to:
 - Manually add/remove fixtures, keypads, load controllers, sensors, switches or dimmers to the room for an advanced intelligent lighting control system.
 - Change Sensor Parameters like Sensitivity, Timeout, target light level.
 - Create user defined groups of fixtures and loads.
 - Define Scenes (Meeting, Presentation, Lunch, Dinner, Test, etc.).
- Factory Default – resets device to out of the box state
 - Push top or bottom of paddle for approximately 20 seconds until the locator light flashes AMBER the second time.
 - Release paddle.
 - Locator light will alternate between GREEN/AMBER while device is resetting, and turn OFF when complete.
 - When complete, device will reboot. Locator light will blink GREEN slowly while looking for an open network.

NOTE: Refinement is required to the initial configuration. Based on some room geometries, the system may not be able to accurately configure itself automatically. The Lumina™ RF SA smart device application will lead you through this process.

SPECIFICATIONS			
Catalog No.	DL05S-D0Z	DL057-D0Z	DL057-30Z
Input Voltage/Frequency	120-277VAC, 50/60Hz.		347VAC, 60Hz
Input Current			
120V	Standby: 0.2W Max: 0.5W+Load Current		-
277V	Standby: 0.3W Max: 0.6W+Load Current		-
347V	-	-	0.5W+Load Current
Load Ratings			
LED, CFL, Electronic Ballast @ 120V	8A	-	-
LED, CFL, Electronic Ballast @ 277V	5A	-	-
LED, CFL, Electronic Ballast @ 347V	-	-	4A, 1388VA
Magnetic Ballast @ 120V	10A	-	-
Magnetic Ballast @ 277V	10A	-	-
Magnetic Ballast @ 347V	-	-	3.45A, 1200VA
Resistive, Tungsten @ 120V	6.67A	-	-
Resistive, Tungsten @ 277V	6.67A	-	-
Resistive, Tungsten @ 347V	-	-	6.67A
Motor @ 120V	1/4Hp (FLA 5.8A)	-	-
Motor @ 277V	1/3Hp (FLA 3.0A)	-	-
Motor @ 347V	-	-	1/4Hp
IP Rating	IP10		
Network Connections	IEEE 802.15.4, 2.4Ghz, wireless, mesh network up to 75' range between devices.		
Operating Temperature	0°C - 40°C (32°F - 104°F)		
Storage Temperature	-40°C to 85°C		
UL Pollution Degree	2		
UL Impulse Voltage	6000V		
Purpose of Control	Operating Control		
Action Control Type	1		
NOTE: Dash indicates model not rated for use.			

TRADEMARK DISCLAIMER: Leviton, Decora and Lumina are Leviton trademarks and Zigbee, iOS, Google Play, App Store, Android, and Bluetooth are the trademarks of their respective owners.

FCC COMPLIANCE STATEMENT:

This equipment has been tested and found to comply with the limits for a Class B digital device, pursuant to part 15 of the FCC Rules. These limits are designed to provide reasonable protection against harmful interference in a residential installation. This equipment generates, uses and can radiate radio frequency energy and, if not installed and used in accordance with the instructions, may cause harmful interference to radio communications. However, there is no guarantee that interference will not occur in a particular installation. If this equipment does cause harmful interference to radio or television reception, which can be determined by turning the equipment off and on, the user is encouraged to try to correct the interference by one or more of the following measures: Reorient or relocate the receiving antenna. —Increase the separation between the equipment and receiver. —Connect the equipment into an outlet on a circuit different from that to which the receiver is connected. —Consult the dealer or an experienced radio/TV technician for help.

FCC CAUTION:

Any changes or modifications not expressly approved by Leviton Manufacturing Co., Inc., could void the user's authority to operate the equipment.

FCC SUPPLIER'S DECLARATION OF CONFORMITY:

Wireless Wall Station Room Controllers DL057-D0Z, DL057-30Z, DL05S-D0Z, manufactured by Leviton Manufacturing Co., Inc. 201 North Service Road, Melville, NY 11747 www.leviton.com. This device complies with part 15 of the FCC Rules. Operation is subject to the following two conditions: (1) This device may not cause harmful interference, and (2) this device must accept any interference received, including interference that may cause undesired operation.

IC STATEMENT

This device complies with Industry Canada license-exempt RSS standard(s). Operation is subject to the following two conditions: (1) this device may not cause interference, and (2) this device must accept any interference, including interference that may cause undesired operation of the device.

RF EXPOSURE AND CO-LOCATION:

To comply with FCC OET Bulletin 65 and ISED RF exposure limits for general population / uncontrolled exposure this device should be installed and operated with a minimum distance of 7.9 inches (20 cm) between the radiator and your body. This transmitter must not be co-located or operated in conjunction with any other antenna or transmitter.

FOR CANADA ONLY

For warranty information and/or product returns, residents of Canada should contact Leviton in writing at Leviton Manufacturing of Canada ULC to the attention of the Quality Assurance Department, 165 Hymus Blvd, Pointe-Claire (Quebec), Canada H9R 1E9 or by telephone at 1-800-405-5320.

LIMITED 5 YEAR WARRANTY AND EXCLUSIONS

Leviton warrants to the original consumer purchaser and not for the benefit of anyone else that this product at the time of its sale by Leviton is free of defects in materials and workmanship under normal and proper use for five years from the purchase date. Leviton's only obligation is to correct such defects by repair or replacement, at its option. For details visit www.leviton.com or call 1-800-824-3005. This warranty excludes and there is disclaimed liability for labor for removal of this product or reinstallation. This warranty is void if this product is installed improperly or in an improper environment, overloaded, misused, opened, abused, or altered in any manner, or is not used under normal operating conditions or not in accordance with any labels or instructions. There are no other or implied warranties of any kind, including merchantability and fitness for a particular purpose, but if any implied warranty is required by the applicable jurisdiction, the duration of any such implied warranty, including merchantability and fitness for a particular purpose, is limited to five years. Leviton is not liable for incidental, indirect, special, or consequential damages, including without limitation, damage to, or loss of use of, any equipment, lost sales or profits or delay or failure to perform this warranty obligation. The remedies provided herein are the exclusive remedies under this warranty, whether based on contract, tort or otherwise.