

ASHRAE 90.1- 2013/2016/2019/2022 Submetering Requirements

Energy
Monitoring and
Management
with VerifEye™
Series 7000
Meters

Accessible metering of total electrical use from whole building to branch circuit with VerifEye™ Series 7000 Meters.

ASHRAE 90.1-2013/2016/2019/2022 requires building owners and facility managers to identify how energy is used by tracking and analyzing the effectiveness of code compliance efforts. The VerifEye Series 7000 Meters and Building Manager Online (BMO) offer a cost effective solution for meeting energy code requirements for electrical load management.



CHALLENGE

State energy code requires building owners and facility managers to monitor electrical loads and total energy usage in a facility.

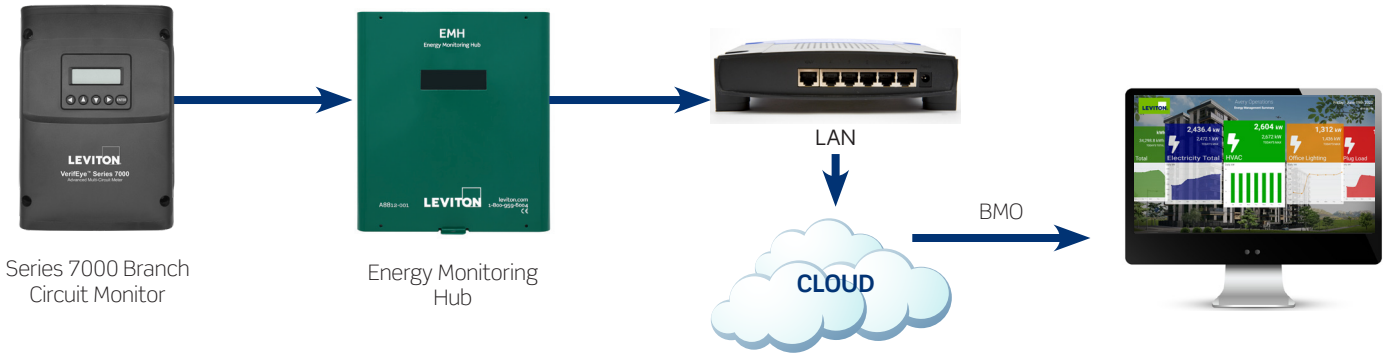
- Solution must be used to meet ASHRAE 90.1-2013/2016/2019/2022 submetering requirements
- Energy metering for energy efficiencies is required for all new and major retrofit projects
- Code requires data management system capable of storing energy data and creating reports for hourly, daily, monthly and annual energy consumption for each major load type

SOLUTION




VerifEye Series 7000 Advanced Branch Circuit Monitor's modular design is configured for monitoring multiple electrical circuits.

- Can be used to comply with ASHRAE 90.1-2013/2016/2019/2022 submetering requirements
- Easy-to-install retrofit application requires minimal wiring during installation while saving time and reducing labor cost
- Building Manager Online software enables users to meet code compliance requirements for data storage, reporting, and display

VERIFEYE SERIES 7000 ADVANCED BRANCH CIRCUIT MONITOR — ASHRAE 90.1-2013/2016/2019/2022 SUBMETERING REQUIREMENTS



WHAT YOU WILL NEED

VERIFEYE SERIES 7000 ADVANCED BRANCH CIRCUIT MONITOR—CODE REQUIREMENTS		QTY
	VeriEye Series 7000 Branch Circuit Monitor 71D48 71D24 71D12 71D03 Monitors current, voltage, demand and energy consumption of each circuit in a panelboard	Varies
	Energy Monitoring Hub (EMH) A8812 Benchmarks building energy usage and view "real-time" performance data	Typically 1 per site
	VeriEye Building Manager Online (BMO) BMOBM BMOAR Allows end users to meet the growing list of code reporting requirements	Varies

Visit our website at: www.leviton.com/verifeye

© 2024 Leviton Manufacturing Co. Inc. All rights reserved. Subject to change without notice.

G-10524B/124-mm

REV SEP 2024

