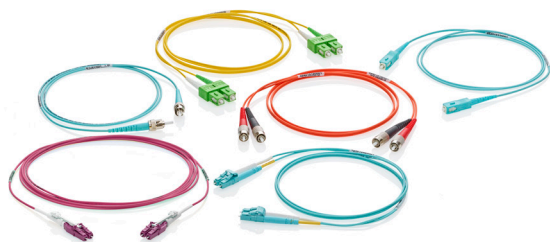


VPC and LPC Fiber Patch Cords

APPLICATION

Fiber Optic Patch Cords are designed to interconnect, or cross-connect fiber networks within structured cabling systems for data centers, Broadband CATV, Passive Optical Networks (PON), WDM or DWDM multiplexing, FTTH, and voice services in ATM and SONET metropolitan and access networks. Common connector patch cord configurations in 1, 2, 3, 5, and 10-meter lengths are stocked for quick service, while hybrid connector combinations, custom lengths, low loss, and custom color patch cords are made to order. Contact customer service for details.



SPECIFICATION

Patch cords shall be compliant with ANSI/TIA-568.3-E. Standard insertion loss shall be a maximum of 0.25 dB for multimode and single-mode. Low loss shall be a maximum of 0.15 dB for multimode and single-mode connectors. Multimode return loss shall be greater than 26 dB and greater than 50 dB for single UPC mode connectors. Single-mode angled physical contact connectors (APC) shall have a minimum of 60 dB return loss. Patch cords shall have a pull force of at least 50 N per IEC 61300-2-4. Connector durability shall be greater than 500 matings for both multimode and single-mode. Patch cord shall be LSHF (Low Smoke Halogen Free), HFFR-LS (Halogen-Free Flame-Retardant Low-Smoke) rated. Patch cords shall be individually packaged with part numbers, descriptions, optical performance, code 39 barcode part number printed on each package, and QR code to access supporting documentation. Patch cords shall include wrap labels including length, end designation, and serial number, providing traceability to factory collected test data.

DESIGN CONSIDERATIONS

- LSHF (Low Smoke Halogen Free), HFFR-LS (Halogen-Free Flame-Retardant Low-Smoke) rated
- All connectors have precision pre-radiused or pre-angled zirconia ferrules supporting consistent End Face Geometry (EFG)
- Single-mode available in UPC and APC polish
- FC and ST connectors have metal bodies
- Duplex clips included with LC and SC duplex configurations
- Bend-insensitive glass (OS2, OM3, and OM4 and OM5)

FEATURES

- Available in simplex, duplex, and pigtail configurations
- LC, LC Unibody with SPECTRO-LINK™ Technology, LC/APC, SC, SC/APC, ST, FC, and FC/APC connector options
- Stock and make-to-order
- TIA compliant color-coded connectors and boots
- Cable jacket and boots color-coded for easy ID of fiber
- Fiber options: OS2, OM1, OM3, OM4, and OM5
- 100% tested for insertion loss and single-mode for return loss
- LC Unibody connectors have patented reversible polarity features, allowing polarity changes in the field without tools
- The LC Unibody design with push/pull grips and 2.0 mm round cable is ideal for high-density applications
- Patch cords include a Limited Lifetime Warranty when used with other Leviton cabling and installed by a Leviton certified contractor
- Other jacket colors available as custom with MOQ and lead time applicable
- Custom configurations via [Leviton.com/mt0](https://leviton.com/mt0)

STANDARDS & REGULATIONS

- ANSI/TIA-568.3-E
- ISO/IEC 11801-1
- Fiber Optic Connector Interchangeability Standards (FOCIS)
- TIA-604-10B (LC)
- TIA-604-3B (SC)
- TIA-604-2B (ST)
- TIA-604-4B (FC)

End face geometry:

- IEC 61755-3-1 (UPC/PC)
- IEC 61755-3-2 (APC)

Fiber compliance:

- OS2: IEC 60793-2-50, ITU-T G.657.A1
- OM1: IEC 60793-2-10
- OM3: IEC 60793-2-10, ITU-T G.651.1
- OM4: IEC 60793-2-10, ITU-T G.651.1
- OM5: IEC 60793-2-10, TIA 492AAAF, ITU-T G.651.1

Jacket flame rating:

- LSZH / HFFR-LS
- IEC 60332-3-24, IEC 60332-1-2
- RoHS

COUNTRY OF ORIGIN

China
USA for LC Unibody Connector

PRODUCT SPECIFICATIONS

VPC and LPC Fiber Patch Cords

MECHANICAL SPECIFICATIONS

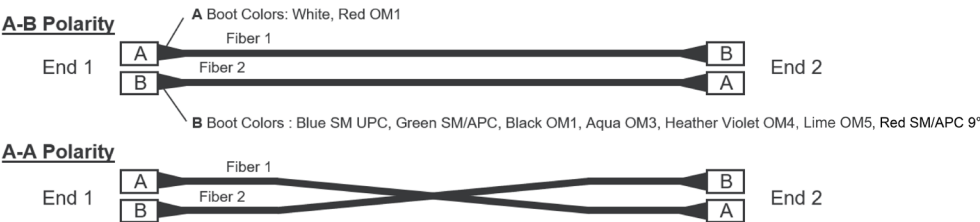
Connector Durability: > 500 Matings

Connector Cable Retention: 50 N (11.24 lbf)

WARRANTY INFORMATION

For Leviton product warranties, go to [Leviton.com/ns/warranty](https://leviton.com/ns/warranty)

FIBER PERFORMANCE									
Cable Type	Fiber Count	Nominal Diameter (mm)	Weight (kg/km)	Tension (N)		Bend radius (mm)		Temperature Range (C°)	
				Installation	Long Term	Installation	Long Term	Operational	Storage
1.2 mm Duplex Zipcord	2	1.2 x 2.5	4 kg/km	50	30	24 mm	12 mm	-20 °C to +70 °C	-25 °C to +70 °C
1.6 mm Duplex Zipcord	2	1.6 x 3.2	6 kg/km	50	30	50 mm	30 mm		
2.0 mm Duplex Round	2	2.0	7 kg/km	50	30	30 mm	20 mm		
2.0 mm Simplex	1	2.0	5 kg/km	50	30	50 mm	30 mm		



PRODUCT SPECIFICATIONS

VPC and LPC Fiber Patch Cords

OPTICAL SPECIFICATIONS			
	Insertion Loss: Standard Performance	Insertion Loss: Low Loss	Return Loss
Single-Mode	≤ 0.25 dB	≤ 0.15 dB	UPC: ≥ 50 dB, APC: ≥ 60 dB
Multimode	≤ 0.25 dB	≤ 0.15 dB	≥ 26 dB

PART NUMBERS					
	Fiber Type	Cable Type	Connectors	Color	Length (meters)
VPC-S2D1ACAC0010	SM OS2	1.6 mm Dup Zip	SC/APC - SC/APC	Yellow	1.0
VPC-S2D1ACAC0020	SM OS2	1.6 mm Dup Zip	SC/APC - SC/APC	Yellow	2.0
VPC-S2D1ACAC0030	SM OS2	1.6 mm Dup Zip	SC/APC - SC/APC	Yellow	3.0
VPC-S2D1ACAC0050	SM OS2	1.6 mm Dup Zip	SC/APC - SC/APC	Yellow	5.0
VPC-S2D1LCLC0010	SM OS2	1.6 mm Dup Zip	LC-LC	Yellow	1.0
VPC-S2D1LCLC0020	SM OS2	1.6 mm Dup Zip	LC-LC	Yellow	2.0
VPC-S2D1LCLC0030	SM OS2	1.6 mm Dup Zip	LC-LC	Yellow	3.0
VPC-S2D1LCLC0050	SM OS2	1.6 mm Dup Zip	LC-LC	Yellow	5.0
VPC-S2D1LCLC0100	SM OS2	1.6 mm Dup Zip	LC-LC	Yellow	10.0
VPC-S2D1LCSC0010	SM OS2	1.6 mm Dup Zip	LC-SC	Yellow	1.0
VPC-S2D1LCSC0020	SM OS2	1.6 mm Dup Zip	LC-SC	Yellow	2.0
VPC-S2D1LCSC0030	SM OS2	1.6 mm Dup Zip	LC-SC	Yellow	3.0
VPC-S2D1LCSC0100	SM OS2	1.6 mm Dup Zip	LC-SC	Yellow	10.0
VPC-S2D1SCSC0010	SM OS2	1.6 mm Dup Zip	SC-SC	Yellow	1.0
VPC-S2D1SCSC0020	SM OS2	1.6 mm Dup Zip	SC-SC	Yellow	2.0
VPC-S2D1ALAL0010	SM OS2	1.6 mm Dup Zip	LC/APC-LC/APC	Yellow	1.0
VPC-S2D1ALAL0050	SM OS2	1.6 mm Dup Zip	LC/APC-LC/APC	Yellow	5.0
VPC-S2D1ALAL0030	SM OS2	1.6 mm Dup Zip	LC/APC-LC/APC	Yellow	3.0
VPC-S2R2LULU0010	SM OS2	2.0 mm Dup Round	LC/UNI-LC/UNI	Yellow	1.0
VPC-M4D1LCLC0010	MM OM4	1.6 mm Dup Zip	LC-LC	Heather Violet	1.0
VPC-M4D1LCLC0020	MM OM4	1.6 mm Dup Zip	LC-LC	Heather Violet	2.0
VPC-M4D1LCLC0030	MM OM4	1.6 mm Dup Zip	LC-LC	Heather Violet	3.0
VPC-M4D1LCLC0050	MM OM4	1.6 mm Dup Zip	LC-LC	Heather Violet	5.0
VPC-M4D1LCLC0100	MM OM4	1.6 mm Dup Zip	LC-LC	Heather Violet	10.0
VPC-M4D1LCSC0020	MM OM4	1.6 mm Dup Zip	LC-SC	Heather Violet	2.0
VPC-M4D1LCSC0030	MM OM4	1.6 mm Dup Zip	LC-SC	Heather Violet	3.0
VPC-M4R2LULU0010	MM OM4	2.0 mm Dup Round	LC/UNI-LC/UNI	Heather Violet	1.0
VPC-M3D1LCLC0010	MM OM3	1.6 mm Dup Zip	LC-LC	Aqua	1.0
VPC-M3D1LCLC0020	MM OM3	1.6 mm Dup Zip	LC-LC	Aqua	2.0
VPC-M3D1LCLC0030	MM OM3	1.6 mm Dup Zip	LC-LC	Aqua	3.0
VPC-M3D1LCSC0010	MM OM3	1.6 mm Dup Zip	LC-SC	Aqua	1.0
VPC-M3D1LCSC0020	MM OM3	1.6 mm Dup Zip	LC-SC	Aqua	2.0
VPC-M3D1LCSC0030	MM OM3	1.6 mm Dup Zip	LC-SC	Aqua	3.0
VPC-M3D1LCSC0050	MM OM3	1.6 mm Dup Zip	LC-SC	Aqua	5.0
VPC-M3D1LCSC0100	MM OM3	1.6 mm Dup Zip	LC-SC	Aqua	10.0
VPC-M5D1LCLC0010	MM OM5	1.6 mm Dup Zip	LC-LC	Lime	1.0

PRODUCT SPECIFICATIONS

 VPC and LPC Fiber Patch Cords

Make-to-order!		VPC AND LPC FIBER PATCH CORD OPTIONS				
Product Type	Fiber Type	Cable Type	Connector	Connector	Cable length (m)**	Customization
<ul style="list-style-type: none"> VPC = Standard Fiber Patch Cord LPC = Low Loss Fiber Patch Cord 	<ul style="list-style-type: none"> S2 = OS2 Yellow M1 = OM1 Orange M3 = OM3 Aqua M4 = OM4 H. Violet M5 = OM5 Lime 	<ul style="list-style-type: none"> S2 = 2.0 MM SIMPLEX D0 = 1.2 MM DUP-ZIP D1 = 1.6 MM DUP-ZIP R2 = 2.0 MM DUP-RND * 	<ul style="list-style-type: none"> LC = LC/UPC LU=LC/UPC SPECTRO-LINK™ Unibody* LP = LC/UPC/Uniboot* AP = LC/APC/Uniboot* L9 = LC/9APC AL = LC/APC SC = SC/UPC AC = SC/APC C9 = SC/9APC ST = ST/UPC FC = FC/UPC AF = FC/APC 	<ul style="list-style-type: none"> LC = LC/UPC LU=LC/UPC SPECTRO-LINK™ Unibody* LP = LC/UPC/Uniboot* AP = LC/APC/Uniboot* L9 = LC/9APC AL = LC/APC SC = SC/UPC AC = SC/APC C9 = SC/9APC ST = ST/UPC FC = FC/UPC AF = FC/APC XX = PTAIL 	<ul style="list-style-type: none"> 0005 = 000.5 Meters 0015 = 001.5 Meters 0150 = 015.0 Meters 	Colors*** <ul style="list-style-type: none"> 01 = Blue 02 = Orange 03 = Green 04 = Brown 05 = Slate 06 = White 07 = Red 08 = Black 09 = Yellow 10 = Violet 11 = Rose 12 = Aqua Polarity <ul style="list-style-type: none"> A = A-A

For assistance customizing your fiber patch cords, please visit leviton.com/mto or call Tech Support +44 (0) 1592 778494.

Notes on configuring fiber patch cords:

- * 2.0 mm duplex round patch cords require LC Unibody or uniboot type connectors. Leviton recommends LC Unibody (LU) connectors for use in applications with SFP+ or SFP28 transceivers that have pull tabs.
- ** Length ≤ 30 metres are configurable in .2/.3/.4/.5/.6/.7/.8/.9 meter increments.
- *** Patch cords with custom colors have a 1-km minimum order quantity.

VPC and LPC Fiber Patch Cords

For further support information, visit Leviton.com/ns/support