

WHITE PAPER



Cabling and Connectivity for Power over Ethernet

Trends, standards, and recommendations
for high-power PoE

Kirk Krahn

Senior Product Manager for Leviton Network Solutions

TABLE OF CONTENTS

Introduction	3
Standards Overview	4
Additional Evaluation of High Power over Ethernet	6
Equipment for Delivering PoE	6
Two-Pair vs. Four-Pair PoE	7
Cabling Recommendations for PoE	7
Connection Integrity and Performance	9
Leviton Connectivity Performance Under Higher Temperatures	10
Preparing for Next Generation, High Power PoE	11

Power over Ethernet (**PoE**) is a proven method of delivering DC power over the same twisted pair cabling used for LAN data transmission.

Power over Ethernet (PoE) has made great strides in recent years. Driven by the demand for ease of installation and boosted by new standards that expand support to more devices, PoE is expected to see explosive growth rates that match the period shortly after the technology was initially introduced in 2003.

There are several appealing reasons for adopting PoE. Foremost, by running power and data transmission over the same cable, PoE eliminates the need for additional wiring installations, saving on cost and redundant cabling. This consolidation also allows for faster deployment at the endpoint, especially to devices at far-off building locations and warehouse transaction work areas, such as security cameras and sales kiosks. PoE also allows for the centralization of power into one location. And it supports new applications such as centralized building controls that can adapt to individual users and the internet of things.

PoE has found success across a variety of applications:

- IP surveillance cameras using PoE can be located in more remote areas, and higher power PoE can support more camera features, such as pan-tilt-zoom and built-in heaters.
- IP PoE based lighting has significantly added to the growth of smart devices in the enterprise.
- PoE has found adoption for AV controls in boardrooms, classrooms, and auditoriums, as well as displays for marketing, info displays at schools, and other interactive devices.
- PoE-enabled Voice over IP (VoIP) phones are a popular choice today in large offices, universities, airports, and more. These often include video screens and touch screens.
- Wireless access points powered over PoE allow them to be installed where there is no power outlet, and they can even be managed through the PoE switch.
- Point-of-Sale (PoS) and Kiosks — PoS systems and information kiosks in malls, hotels, and other areas can be placed in remote locations.

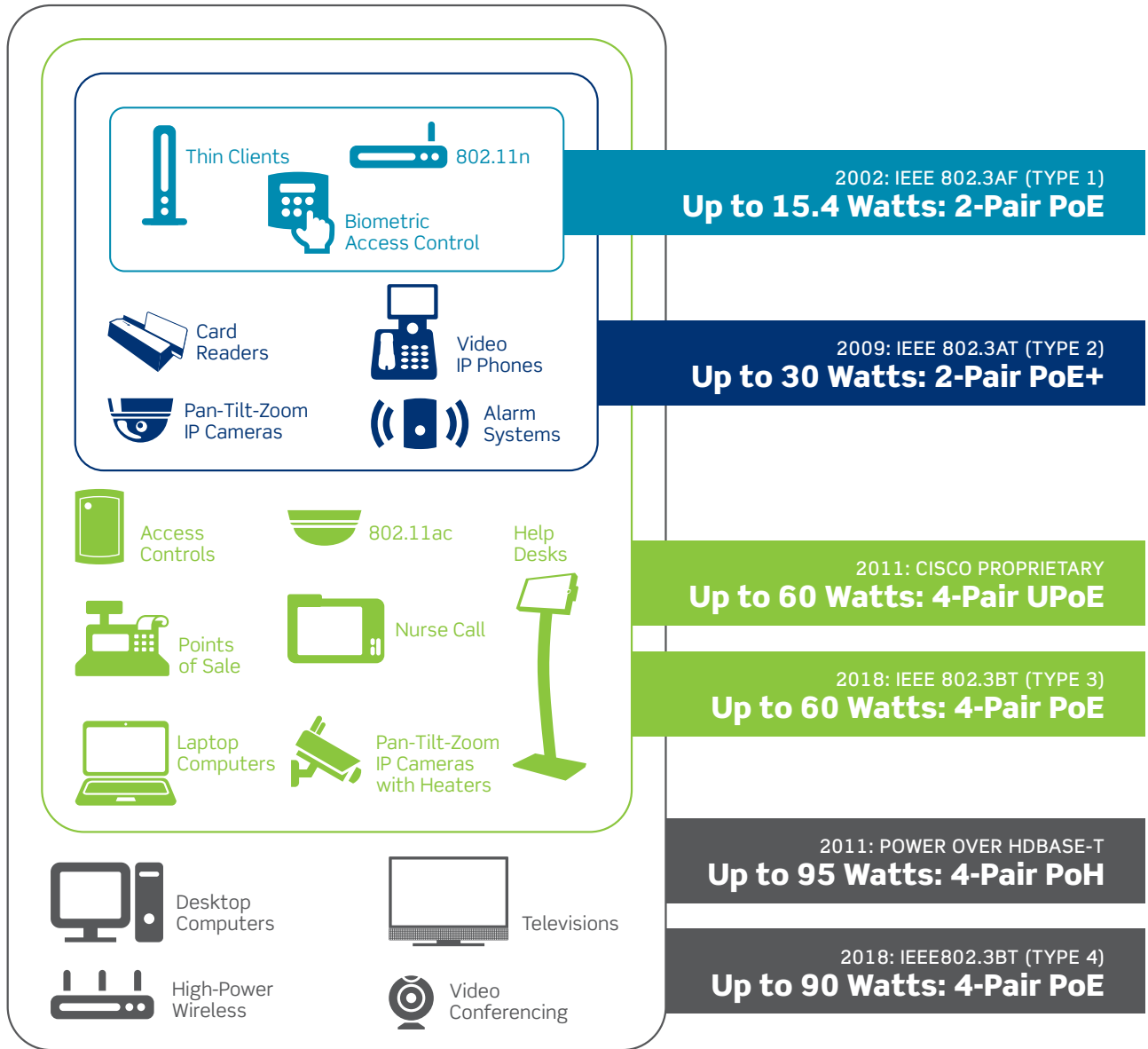
PoE has evolved to encompass a tremendous range of devices and applications. However, without the right cabling and network design in place, next-generation PoE can encounter cable heating and connectivity issues that may adversely affect performance. Cabling standards bodies are working to expand the potential of PoE while addressing safety and performance issues.

STANDARDS OVERVIEW

In addition to existing standards that define low levels of PoE, new standards have paved the way for PoE up to 60 and 90 watts, expanding the types of devices and applications supported in the enterprise. However, higher-current PoE brings important cabling and connectivity considerations that must be addressed in order to ensure network performance. **These considerations are outlined in current and emerging standards.**

- 2002** **The Institute of Electrical and Electronics Engineers (IEEE) published the 802.3af standard,** which outlined Power over Ethernet at up to 15.4 watts of DC power, while supporting 10BASE-T and 100BASE-T. Power was delivered over two of the four twisted pairs of Cat 3 cable or higher.
- 2009** **IEEE introduced 802.3at, also known as the “PoE+” standard.** This update allows delivery of up to 30 watts, and supports 1000BASE-T over Cat 5e or 6. It transmits power over two of the four cabling pairs, and is backwards compatible to 15.4 watt PoE.
- 2010** **The HDBaseT™ Alliance introduced Power over HDBaseT (PoH).** HDBaseT delivers video, audio, control, 100 Mb/s Ethernet, and power. The PoH standard is based on the 802.3at standard, modified to enable delivery of up to 95 watts over 4-pair Cat 5e, 6, or 6A. Leviton recommends Cat 6A for PoH installations to ensure the most reliable performance.
- 2011** **Cisco created a non-standard PoE implementation called Universal Power over Ethernet (UPOE).** UPOE can use all four cabling pairs and supply up to 60 watts, further expanding the types of devices that can be supported.
- 2018** **IEEE introduced 802.3bt,** which defines PoE over four pairs and supports 10GBASE-T. The standard defines two new tiers of PoE: Type 3 for up to 60 watts, and Type 4 for up to 90 watts. Both support devices requiring higher power, such as laptops, displays, and next-generation wireless access points.

The Telecommunications Industry Association (TIA) and the International Organization for Standardization (ISO) have updated standards that address cabling to support 4-pair PoE in accordance with 802.3bt. TIA TSB-184-A Guidelines for Supporting Power Delivery Over Balanced Twisted-Pair Cabling, ISO/IEC TS29125:2017 "Information Technology — Telecommunications Cabling Requirements for Remote Powering of Terminal Equipment" and CENELEC TR 50174-99-1 offer cabling guidelines to support IEEE 802.3bt 4-pair PoE, as well as other applications. The guidelines provide guidance on maximum bundle size for different category cables based on installation conditions and the maximum power delivered (15.4, 30, 60, or 90 watts).



ADDITIONAL EVALUATION OF HIGH POWER OVER ETHERNET

In addition to TIA, ISO, and IEEE, other organizations are addressing concerns surrounding high PoE. In 2015, independent safety and certification company Underwriter’s Laboratory (UL) conducted a fact-finding study to investigate the effects of higher levels of current on communications cable. The study found that higher powered cables (greater than 60 watts), when grouped in large bundles or routed in an insulated pathway such as fire-stops and pass-throughs, may increase cable temperatures beyond their rated levels. As a result, UL introduced a Limited Power (LP) Certification marking to indicate that the cable has been evaluated to deliver the marked current under reasonable installation scenarios without exceeding the cable’s temperature rating. LP cables are an optional designation, and the cables are not required for PoE or any other types of installations.

In addition, in June 2016 the National Fire Protection Association (NFPA) voted for changes to the 2017 National Electric Code (NEC) that will affect PoE. The NEC provides standards for installing electrical wiring and equipment in the United States, and while not a law, it is commonly adopted by states and cities around the country. The NFPA voted to create a new ampacity table to be referenced when the power supplied to conventional cables exceed 60 watts. This table, included in NEC article 725, governs the maximum cable bundle size allowed for conventional telecommunications cables with various temperature ratings, carrying various level of PoE.

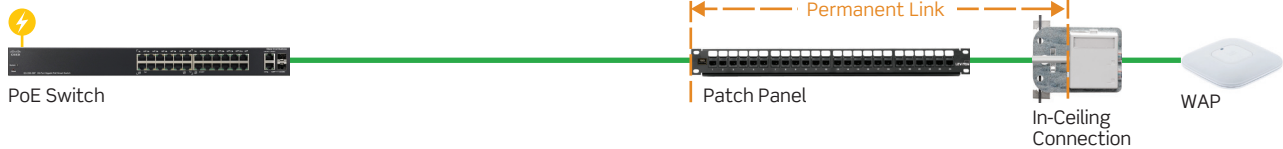
The updated NEC also includes the new LP cable classification. LP-rated cables can act as an alternative to conventional cables and the new ampacity table. However, these installations are only valid up to 30 °C maximum ambient. Above 30 °C, the appropriate current derating table in the code needs to be used. LP cables would not be mandated by the new NEC to be published in 2017, but included as an option.

EQUIPMENT FOR DELIVERING POE

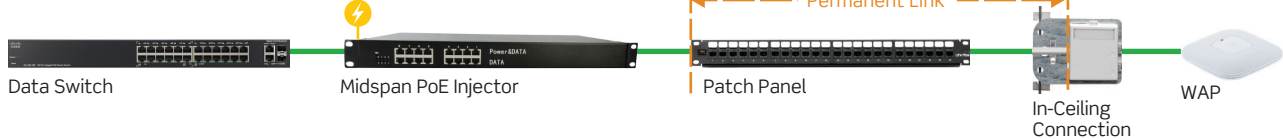
A PoE system has two primary components: Power Sourcing Equipment (PSE) and a Powered Device (PD). The PD receives its power from the PSE using standard Ethernet cabling. The PSE can be divided into two types: endspans and midspans. Endspans are essentially Ethernet switches with PoE circuits added, while midspans are positioned between the switch and the powered device.

Midspan Versus Endspan

Endspan Power Source Equipment



Midspan Power Source Equipment



Midspans, also known as PoE injectors, are typically used when PoE is the only upgrade being made to the network, such as when adding IP phones or wireless access points to an existing non-PoE network. This avoids replacing switches that do not offer PoE but are still within their productive life cycles. Midspans may be located anywhere, as long as they are installed in a standards-compliant facility, such as a telecommunication room or enclosure, and are not installed as a part of a permanent link.

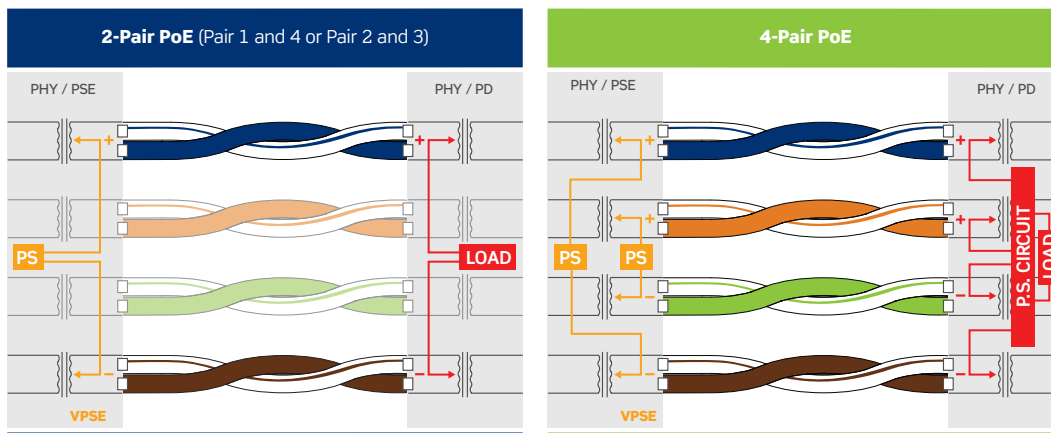
The chart below shows the acceptable power loss between the PSE and the PD. It is important to note that this indicates the maximum allowable power loss between the devices, not the typical or expected loss.

PoE Type	PSE Output (watts)	Power at PD (watts)	Standard
1	15.4	12.95	IEEE 802.3af
2	30	25.5	IEEE 802.3at
3	60	51	IEEE 802.3bt
4	90	73	IEEE 802.3bt

The loss in the cable is a function of the resistance of the cable, mostly driven by gauge size of the copper conductors. Smaller gauges have more resistance. For example, when subjected to PoE, a 24 AWG cable will have a higher energy loss when compared to a 23 or 22 AWG cable. The distance between the PSE and PD can also affect power loss. As an Ethernet application, PoE is designed to work over a 100 meter long channel as established by IEEE, and channels longer than 100 meters may see increased power loss beyond what is listed above.

TWO-PAIR VS. FOUR-PAIR POE

As mentioned in the standards overview, recently updated PoE standards enable power delivery over all four pairs of the cable. The standards developed by IEEE also define PoE over four pairs. In previous standards, power was limited to just two pairs, which meets the needs of devices that require lower power such as 15 and 30 watts. But as PoE has expanded to support high-power devices, four-pair PoE doubles the amount of available power.



CABLING RECOMMENDATIONS FOR POE

One issue that can affect performance is heat generation in cable bundles. When power is added to balanced twisted-pair cabling, the copper conductors generate heat and temperatures rise. The heat dissipates into the surrounding area until a stable temperature is reached, with the cable bundle at a higher temperature than the surrounding ambient temperature. High temperatures can lead to higher insertion loss, and in turn shorter permissible cable lengths. It can also increase bit error rates, and create higher power costs due to more power dissipated in the cabling. As recent PoE standards allow for higher power transmissions, temperature concerns will likely become even more prevalent. The Telecommunications Industry Association (TIA) recommends 15 degrees Celsius as the maximum allowed temperature rise above ambient as a result of power over the cabling.

Cable temperatures should not exceed the temperature rating for the cable, and premises cabling typically has a maximum temperature rating of 60 degrees Celsius (140° F). However, today there are many cables available with higher temperature ratings, including those at 70, 75 and even 90 degrees Celsius. In addition to considering cable with higher ratings, there are other ways to avoid performance issues related to higher cable temperatures, including considering cable construction, category rating, and installation best practices.

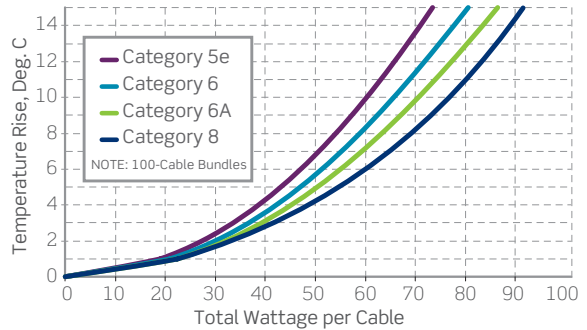
Use Higher Category Cabling

Higher category-rated cable typically means larger gauge sizes, and as power currents increase, these larger conductors will perform better than smaller cable. TIA testing in Figure 2 compares the temperature rise in 100 cable bundles of Category 5e, 6, and 6A, and 8, as the power increases (over all four pairs).

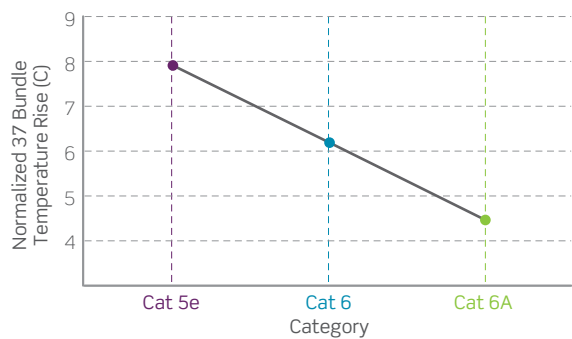
The higher-category cabling is able to support more current capacity at the maximum allowable 15 degrees. It becomes clear that higher category cabling will be necessary to minimize temperature increases while supporting PDs that require more power. For this reason Leviton recommends using Category 6A for new 4-pair PoE applications.

Leviton has performed 52 different tests related to PoE, with extensive PoE testing on every major cable the company sells. These tests also compared temperature increases between category ratings, at 37, 61, and 91 cable bundles. Leviton testing found significant differences in temperature increases between Category 5e, 6 and 6A ratings.

FIGURE 2



Normalized 37 Bundle Temperature Rise



Reduce the Number of Cables per Bundle

If cables are bundled or closely grouped with other cables, cables near the center of the bundle have difficulty radiating heat out into the environment. Therefore, the cables in the middle of the bundle heat up more than those toward the outer layers of the bundle. The larger the bundle size, the more the cables in the center will heat up.

Separating large cable bundles into smaller bundles or avoiding tight bundles will reduce temperature rise. For example, TIA tested the temperature of a bundle of 91 cables, and three bundles of 37 cables. The temperature in the center of a 91-cable bundle was higher than the worst case temperature in center point of three bundles. Physically separating the three bundles from each other further reduced the maximum temperature.

Also, where possible, plan the rack layout for non-powered and powered cables to be mixed in the same bundle, and place non-energized cables in the center of the bundle and energized cable in the outer layers of the bundles.

Design pathways to support airflow

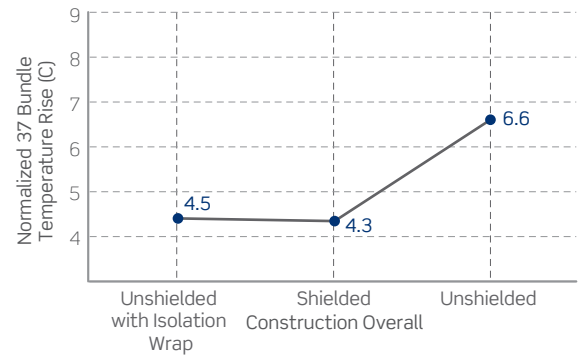
Enclosed conduit can contribute to heat issues. When possible, use ventilated cable trays for better airflow. Open mesh cable trays and ladder racks will improve heat dissipation and create more opportunities for loosely grouping cables instead of tight bundling. Also, avoid squeezing or “necking down” cable to small areas such as through holes and fires stops. Provide as large an area possible for this transition.

Install Shielded Cable or Unshielded Cable with Isolation Wrap

Leviton engineers recently tested how cable construction affected temperature rise. They compared three cable types: traditional Unshielded Twisted Pair (UTP) cable; UTP cable with a Leviton patented metallic “isolation wrap” that surrounds the 4-pair core; and shielded (F/UTP) cable. The UTP cable with Leviton-patented isolation wrap features separations in the wrap to prevent a current from flowing along the length of the cable. This isolation wrap provides additional alien crosstalk suppression, but eliminates the need for grounding and bonding typically required with shielded cabling.

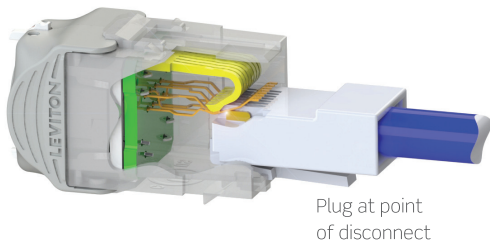
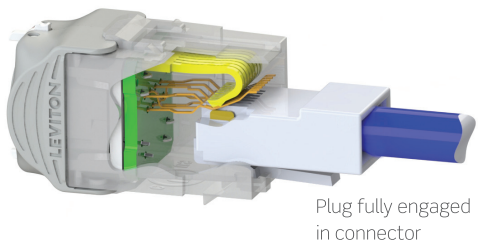
Testing these cable types in 37-cable bundles found that both shielded and isolation-wrap cable performed better than traditional UTP cable, with average bundle temperature increases at more than 2 degrees Celsius below the traditional UTP cable bundle.

Normalized 37 Bundle Temperature Rise



CONNECTION INTEGRITY AND PERFORMANCE

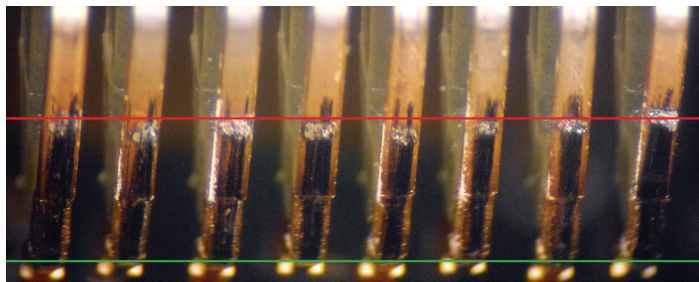
Another consideration with higher current PoE is the potential for damage over time to RJ-45 connectors in the network. Specifically, when a patch cord is unplugged while the connection is energized, a small electrical arc can occur between the connector and the plug. During operation, the plug's contacts rest on the “knuckle” in the connector tines. Arcing occurs at the point where the plug's contacts separate from the connector tines during disconnect. While there is no immediate damage (and the arc is not dangerous to users), it can create pitting on the connector tines and patch cord plug contacts over numerous disconnections, weakening the integrity of the connection.



Jacks and patch cords with 50 µm gold-plated tines should always be used, as specified by industry standards. There are jacks and patch cords available on the market that do not have gold plating — often sold at a much lower cost — and these non-compliant options will fail more rapidly when used in PoE applications. Connectors should also meet contact resistance requirements found in the IEC 60512-99-001 standard covering connectors for electronic equipment.

In addition, Leviton recommends using a jack that is designed to keep the connection point between the mated connector tines and plug at a distance from the point of arcing damage. Leviton has designed the geometry of its jacks so that arcing occurs at a different area from the point of contact during data transmission.

Leviton lab testing confirms that the location of the pitting in Leviton jacks is sufficiently far from the point of contact between the tines and plug when mated. This means that the pitting does not affect the electrical performance of the connectors within a channel, providing additional longevity.



Red line = Point where pitting damage occurs from PoE+ disconnect while energized

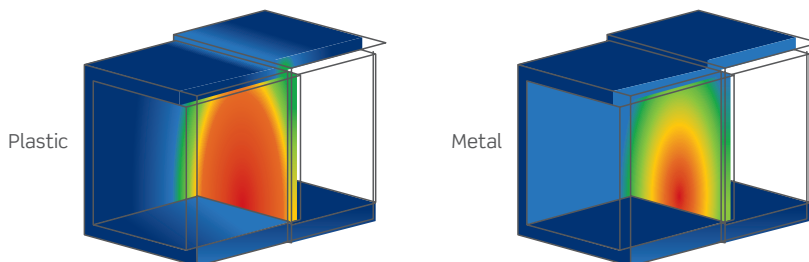
Green line = Point of contact between connector tine and plug when mated

In addition, Leviton connectors include patented Retention Force Technology (RFT™), which maintains constant contact force at the connector and plug interface, preventing inadvertent intermittent disconnects caused by vibration or operational movement of the plug in the critical connector and plug mating region. The result prevents tine damage, saves on costly repairs and increases overall system longevity.

LEVITON CONNECTIVITY PERFORMANCE UNDER HIGHER TEMPERATURES

As with cable, temperature rise in connectors can also affect channel performance. Leviton engineers tested Atlas-X1 jacks and patch cords against standards requirements. The jack was tested to the IEC 60512-5-2 Connectors for Electronic Equipment standard. The higher performance in the Atlas-X1 jack is largely due to its unique metal-body construction. Leviton testing found that using metallic jack body — instead of commonly-used ABS plastic — creates a 53 percent improvement in heat dissipation.

Thermal simulation of connector bodies using plastic and zinc



Leviton also tested Atlas-X1™ Patch Cords for compliance with the TIA TSB-184 temperature rise limit of 15 °C above ambient at 50 watts, and found its Cat 6 and Cat 6A cords maintained a temperature rise of less than 10 °C in bundled configurations.



PREPARING FOR NEXT GENERATION, HIGH-POWER POE

High-quality connectivity is essential for attaining the performance and reliability needed in current and future PoE network operations. System components should be designed to minimize temperature increases and meet industry standards for performance. This ensures system longevity and prepares networks for future upgrades and growth, such as higher power requirements from PoE-enabled devices or larger cable bundles.

Leviton systems for PoE — including cable, jacks, patch cords, and patch panels — are component rated, and third-party tested and verified to exceed industry standard performance. Leviton Atlas-X1™ connectivity was successfully tested to deliver 100-watt PoE, enabling the transmission of power and data to a wider range of remote devices. The ability to deliver 100 watts exceeds the IEEE 802.3bt (type 4) PoE standard. System components have undergone rigorous lab testing to meet the need for higher bandwidth and power, while limiting the temperature rise in large cable bundles and remaining within the cable's listed rating.

Learn more about PoE and Leviton's PoE-optimized solutions at [Leviton.com/PoE](https://www.leviton.com/PoE).

Today's networks must be fast and reliable, with the flexibility to handle ever-increasing data demands. Leviton can help expand your network possibilities and prepare you for the future. Our end-to-end cabling systems feature robust construction that reduces downtime, and performance that exceeds standards. We offer quick-ship make-to-order solutions from our US and UK factories. We even invent new products for customers when the product they need is not available. All of this adds up to the **highest return on infrastructure investment.**

NETWORK SOLUTIONS DIVISION HEADQUARTERS

2222 - 222nd Street S.E., Bothell, WA, 98021, USA | leviton.com/ns

Inside Sales +1 (800) 722 2082 insidesales@leviton.com
 International Inside Sales +1 (425) 486 2222 intl@leviton.com
 Technical Support +1 (800) 824 3005 / +1 (425) 486 2222 appeng@leviton.com

BERK-TEK CABLE HEADQUARTERS

132 White Oak Rd, New Holland, PA 17557 | leviton.com/ns/berktek

Inside Sales +1 (800) 237 5835 berktek.info@leviton.com
 Technical Support +1 (800) 237 5835 berktek.support@leviton.com

NETWORK SOLUTIONS EUROPEAN HEADQUARTERS

Viewfield Industrial Estate, Glenrothes, KY6 2RS, UK | leviton.com/ns/emea

Customer Service +44 (0) 1592 772124 customerserviceeu@leviton.com
 Technical Support +44 (0) 1592 778494 appeng.eu@leviton.com

NETWORK SOLUTIONS MIDDLE EAST HEADQUARTERS

Bay Square, Building 3, Office 205, Business Bay, Dubai, UAE | leviton.com/ns/middleeast

Customer Service +971 (4) 247 9800 lmeinfo@leviton.com

CORPORATE HEADQUARTERS

201 N. Service Road, Melville, NY 11747 USA | leviton.com

Customer Service +1 (800) 323 8920 / +1 (631) 812 6000 customerservice@leviton.com

ADDITIONAL OFFICES

Africa +971 (4) 247 9800 lmeinfo@leviton.com
 Asia / Pacific +1 (631) 812 6228 infoasean@leviton.com
 Canada +1 (514) 954 1840 pcservice@leviton.com
 Caribbean +1 (954) 593 1896 infocaribbean@leviton.com
 China +852 2774 9876 infochina@leviton.com
 Colombia +57 (1) 743 6045 infocolombia@leviton.com
 France +33 (0) 1709 87825 infofrance@leviton.com
 Germany +49 (0) 173 272 0128 infogermany@leviton.com
 Italy +39 02 3534 896 (Milan) / +39 06 8360 0665 (Rome) infoitaly@leviton.com
 Latin America & Mexico +52 (55) 5082 1040 lsamarketing@leviton.com
 South Korea +82 (2) 3273 9963 infokorea@leviton.com
 Spain +34 91 490 59 19 infospain@leviton.com
 Sweden +46 70 9675033 infosweden@leviton.com

ALL OTHER INTERNATIONAL INQUIRIES international@leviton.com

