

Getting Started Guide



OUTDOOR PLUG-IN SWITCH

PLEASE READ THESE INSTRUCTIONS BEFORE INSTALLING

DI-000-D2150-02B

Cat. No. D2150



Easy Wi-Fi lighting control for the whole home.



See the complete line of My Leviton™ app compatible dimmers, switches, plug-ins, and controllers at: leviton.com/decorasmart

1



Welcome

Leviton's Decora Smart Wi-Fi Outdoor Plug-In Switch makes it easy to add smart control to outdoor lighting, such as string lights, holiday lights, and landscape lighting. With a 15A rating and support for motor loads up to 3/4 HP, you can also control holiday decorations and inflatables, fountain pumps, outdoor fans, aquarium pumps, and other electronics and small appliances.

Use the My Leviton app to create a schedule, set the run time, select sunrise/sunset options, or enable the built in light sensor. You can also pair a wireless Anywhere Companion Switch for convenient wall-mount control.

Connect to your smart home platform of choice. The Outdoor Plug-In Switch works with Matter, Amazon Alexa, Google Home, Apple Home/Siri, and more. Use your voice or your mobile device with the My Leviton app when you are away from home.



2



Your Outdoor Plug-In Switch works with:

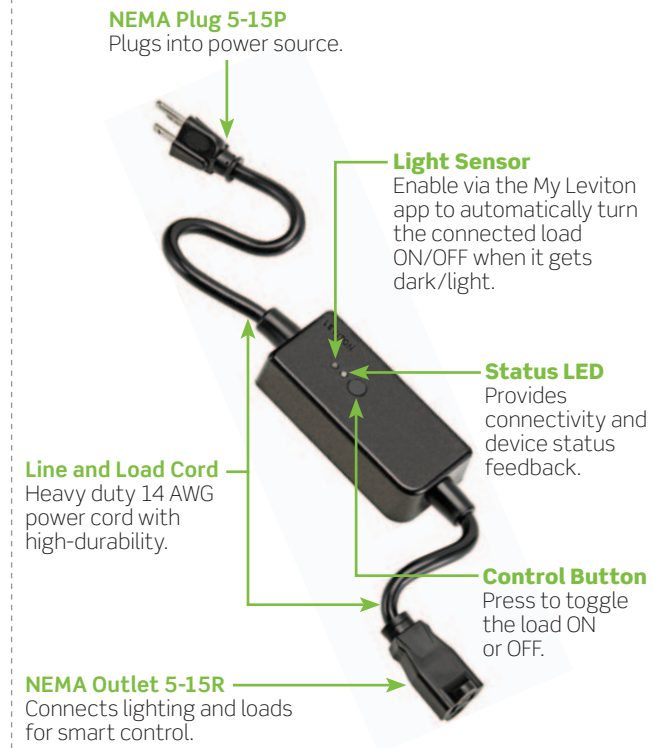
- General purpose loads up to 15 amps, for specific ratings. See the chart below.
- For indoor or outdoor use in all weather conditions.
- Tested to be certified for an Ingress Protection rating of IP65 for dirt, dust, moisture, rain, sprinklers, hoses, snow, and UV corrosion.
- For outdoor use, plug into a GFCI protected circuit to provide ON/OFF control of the connected load/lights.
- Can be used with magnetic low-voltage landscape lighting transformers.
- Can be used with extension cords (recommend 14 AWG/15A exterior-rated extension cords).
- **Additional self-service support options can be found in the My Leviton app or at leviton.com/decorasmart.**

RATINGS	
General Use	15A, 120VAC, 60Hz
LED / CFL / Electronic Ballast	5A
Incandescent / Halogen	1,500W
Magnetic Ballast, MLV	12A
Motor	3/4 HP
Operating Temp	-20 °F to 122 °F (-29 °C - 50 °C)
Operating Humidity	10% - 90% non-condensing
NETWORK	
Wi-Fi	802.11 b/g/n networks - 2.4 GHz only
Security	WPA, WPA2, or WPA3 security, or open
Bluetooth	v5.0
MY LEVITON APP	
iOS	Version 12.0 or later
Android™	Version 8.0 or later

3



At a glance



4



Features

- ON/OFF control of string lights and holiday lights, holiday decorations and inflatables, landscape and path lighting, fountain pumps, aquarium pumps, outdoor fans, and other electronics and small appliances.
- Pairs with up to three DAWSC Anywhere Switch Companions for wire-free wall-mount control.
- IP65 - weather resistance protects electronics from dirt, dust, moisture, rain, sprinklers, hoses, snow, and UV corrosion.
- Wide operating temperature range of -20 °F to 122 °F.
- Light Sensor can be used outside to automatically turn lights On during evening hours and Off during daylight hours.
- Create a schedule to control connected loads at specific times, based on sunrise/sunset, or turn off after a specified duration.
- Wi-Fi operation designed to support outdoor use with signal strength indication in the My Leviton app.
- Rear mounting holes allow easy placement next to an outdoor outlet.
- Memory maintains ON/OFF status of load during a power disruption.

For more information and features visit: leviton.com/decorasmart

5



What you need to make it work:

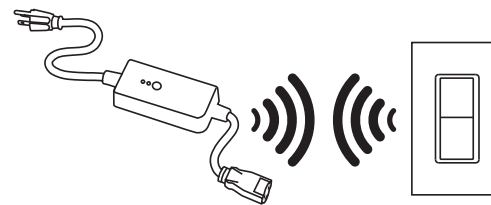
- A 2.4GHz Wi-Fi network with high speed internet.
- An iOS (12.0 or later) or Android™ (8.0 or later) mobile device.
NOTE: Make sure Wi-Fi and Bluetooth are enabled on your mobile device.
- A My Leviton account, if connecting using the My Leviton App.
- A Matter controller or hub, if connecting using Matter.



Quick tip

You can pair a wireless Anywhere Switch Companion directly to your Outdoor Plug-In Switch to control from convenient wall-mount locations (no Wi-Fi or App needed). See page 12, or learn more about Anywhere Companions and find connection instructions at leviton.com/anywhere.

Anywhere Companions are designed to provide a 50ft wireless range to the primary device. When used with an Outdoor Plug-In Switch placed outside, the range may be reduced due to environmental factors.



6



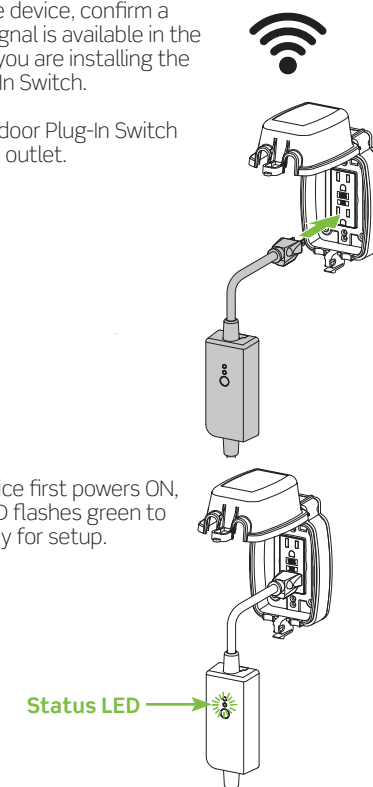
Installation

WARNING: ELECTRIC SHOCK HAZARD.

May result in serious injury or death. When used outdoors, this device must be plugged into a GFCI protected circuit.

1. Using a mobile device, confirm a strong Wi-Fi signal is available in the area in which you are installing the Outdoor Plug-In Switch.
2. Insert the Outdoor Plug-In Switch into a 120VAC outlet.

3. When the device first powers ON, the Status LED flashes green to show it is ready for setup.

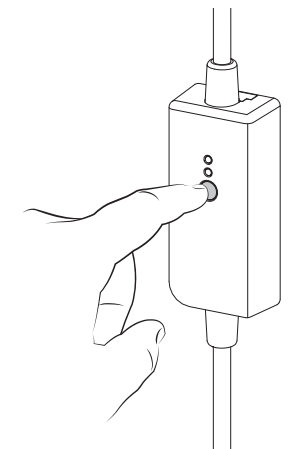


7



Installation (continued)

4. Press to turn ON and OFF.



NOTES:

- Make sure the Outdoor Plug-In Switch's Outlet is at least 3 in. above the ground when plugged in to avoid it being immersed in water.
- Do not use in a switched outlet.
- The light sensor was designed for outdoor use. For best performance, position the device so the light sensor is pointed away from connected lights and shaded areas, and provide an unobstructed view towards natural ambient light.

8

If you need help...

ONLINE
decorasmartsupport.leviton.com

CHAT
www.leviton.com/support

EMAIL
dssupport@leviton.com

CALL
1-800-824-3005 (USA)
1-800-405-5320 (Canada)

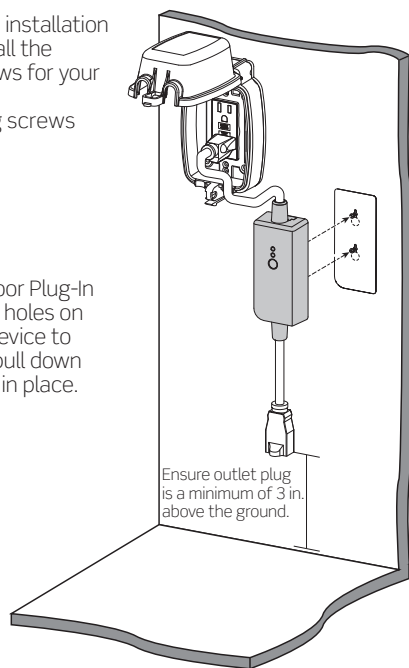
Leviton Manufacturing Co., Inc.
201 North Service Road, Melville, NY 11747

© 2023 Leviton Manufacturing Co., Inc. All rights reserved.

Specifications subject to change at any time without notice.

Mounting (optional)

- Use the included installation template to install the appropriate screws for your wall material.
NOTE: Mounting screws not included.



- Mount the Outdoor Plug-In Switch using the holes on the rear of the device to the screws and pull down gently to secure in place.

NOTE: The Outdoor Plug-In Switch can be removed from the wall screws by gently pushing up on the device.

Your Decora Smart Wi-Fi Outdoor Plug-In Switch is ready to be setup!

9

Device setup

- The Decora Smart Wi-Fi Outdoor Plug-In Switch can be connected to the My Leviton cloud (see page 11), to Matter using a compatible Matter controller or Hub (see page 13), or to both.
- For voice control with Amazon Alexa, you can set up your device with My Leviton and link your Amazon Account, or you can use Matter to set it up directly in the Amazon Alexa app if you have a compatible Amazon device.
- For voice control with Google Assistant-enabled devices, you can set up your device with My Leviton and link your Google Account, or you can use Matter to set it up directly in the Google Home app if you have a compatible Google device.
- For voice control with Siri, use Matter to set up your device directly in the Apple Home app; controlling this Matter-certified accessory with the Apple Home App and Siri requires an Apple Home hub such as HomePod or Apple TV running the latest software.
- For use with Samsung SmartThings, use Matter to set up your device in the SmartThings app and connect to a compatible SmartThings Hub.



10

Get the app

To download the My Leviton app, visit my.leviton.com and select the link or scan the QR code below for your device.



Add your device to My Leviton

- Make sure the device is in setup mode (status LED should be blinking GREEN). If the status LED is not blinking GREEN, see page 15 for instructions on how to put the device in setup mode.
- Launch the My Leviton app.
- Log in or choose "Sign Up" for an Account.
- Follow the instructions on the screen.
- Once logged in, tap the "+" in the upper-right corner of the devices page and select "Add Device".
- Follow the app instructions to add your device and connect it to your home Wi-Fi network.

11

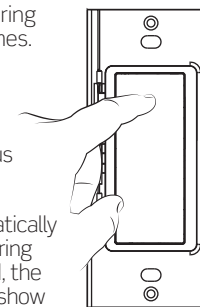
Test My Leviton app control

- Open the My Leviton app.
- Tap icon to turn ON/OFF.



Pair an Anywhere Companion (optional)

- Place the Anywhere Companion in Pairing mode by pressing the top rocker 5 times. Its Status LED will blink GREEN.
- Place the primary Outdoor Plug-In Switch into Pairing mode by pressing the Control Button 5 times. The Status LED will flash GREEN/AMBER.
- The Outdoor Plug-In Switch will automatically pair to the Anywhere Companion in Pairing mode in wireless RF range. Once paired, the Status LED will quickly flash GREEN to show a successful connection.



Learn more about Companion devices and find connection instructions at Leviton.com/anywhere.

12

Safety first

WARNING: TO AVOID FIRE, PERSONAL INJURY OR DEATH DO NOT USE for the control of high power heating appliances such as portable heaters. There can be unexpected consequences if not used with care. For example, an empty coffee pot can be remotely turned on. If that should happen, your coffee pot could be damaged from overheating. If an electric heater is turned on by remote control while clothing is draped over it, a fire could result. This module is not rated to control electronic low-voltage and high frequency power supply transformers, nor high pressure discharge lamps (HID lighting). This includes mercury-vapor, sodium vapor and metal halide lamps.

WARNINGS:

- This product is to be installed and/or used in accordance with electrical codes and regulations.
- If you are unsure about any part of these instructions, consult an electrician.
- Unplug unit when servicing loads.
- Leviton Wi-Fi enabled devices rely on Wi-Fi communication. For customers looking to install a large number of devices it is recommended to consult the wireless network's access point specifications to determine the maximum number of supported Wi-Fi devices. In some cases, for example large installations, it may be necessary to upgrade to newer high performance wireless grade access points to ensure proper operation.
- Save this instruction sheet. It contains important technical data along with testing and troubles. Troubleshooting information which will be useful after installation is complete.

ADDITIONAL RATINGS:

- Purpose of control: Operating Control, Energy Management Equipment
- Action Control Type: 1.C
- Pollution Degree: 4
- Software Class: Class A
- Rated Impulse Voltage: 1,500V
- Disconnection Type: Micro

Limited 1 Year Warranty & Exclusions

For Leviton's limited product warranty, go to www.leviton.com. For a printed copy of the warranty, call 1-800-824-3005.

FOR CANADA ONLY

For warranty information and/or product returns, residents of Canada should contact Leviton in writing at Leviton Manufacturing of Canada ULC to the attention of the Quality Assurance Department, 165 Hymus Blvd, Pointe-Claire (Quebec), Canada H9R 1E9 or by telephone at 1 800 405-5320.

FCC COMPLIANCE STATEMENT

The enclosed device complies with Part 15 of the FCC Rules. Operation is subject to the following two conditions: (1) This device may not cause harmful interference (ii) This device must accept any interference received, including interference that may cause undesired operation. Any changes or modifications not expressly approved by Leviton could void the user's authority to operate this equipment. This equipment has been tested and found to comply with the limits for a Class B digital device, pursuant to part 15 of the FCC Rules. These limits are designed to provide reasonable protection against harmful interference in a residential installation. This equipment generates uses and can radiate radio frequency energy and, if not installed and used in accordance with the instructions, may cause harmful interference to radio communications. However, there is no guarantee that interference will not occur in a particular installation. If this equipment does cause harmful interference to radio or television reception, which can be determined by turning the equipment off and on, the user is encouraged to try to correct the interference by one or more of the following measures:

- Reorient or relocate the receiving antenna.
- Increase the separation between the equipment and receiver.
- Connect the equipment into an outlet on a circuit different from that to which the receiver is connected.
- Consult the dealer or an experienced radio/TV technician for help.

FCC CAUTION

Any changes or modifications not expressly approved by Leviton Manufacturing Co., Inc., could void the user's authority to operate the equipment.

FCC SUPPLIER'S DECLARATION OF CONFORMITY

Model D2150 - Decora Smart Wi-Fi Outdoor Plug-In Switch is manufactured by Leviton Manufacturing Co., Inc. 201 N. Service Road, Melville, NY 11747. www.leviton.com This device complies with part 15 of the FCC Rules. Operation is subject to the following two conditions: (1) This device may not cause harmful interference, and (2) this device must accept any interference received, including interference that may cause undesired operation.

IC STATEMENT

This device complies with Industry Canada license-exempt RSS standard(s). Operation is subject to the following two conditions: (1) this device may not cause interference, and (2) this device must accept any interference, including interference that may cause undesired operation of the device.

RF EXPOSURE AND CO-LOCATION

To comply with FCC OET Bulletin 65 and ICES RF exposure limits for general population and uncontrolled exposure, this device shall be installed and operated with a minimum distance of 7.9 inches (20 cm) between the radiator and your body. Also, must not be co-located or operated in conjunction with any other antenna or transmitter.

Copyright and Trademark Information

Decora and Decora Smart are the registered trademarks of Leviton Manufacturing Co., Inc., registered in the U.S., Canada, Mexico and China. Google, Android, Google Play and Google Home are trademarks of Google LLC. Alexa, and related logos are trademarks of Amazon.com, inc. or its affiliates. Apple®, Apple Home®, and Siri® are trademarks of Apple Inc., registered in the U.S. and other countries. Matter, IFTTT and the Wi-Fi CERTIFIED logo are trademarks of their respective owners and any use of such marks by Leviton is under license. Use of the Works with Apple badge means that an accessory has been designed to work specifically with the technology identified in the badge and has been certified by the developer to meet Apple performance standards. Apple is not responsible for the operation of this device or its compliance with safety and regulatory standards. Use herein of other third party trademarks, service marks, trade names, brand names and/or product names are for informational purposes only, are/ may be the trademarks of their respective owners; such use is not meant to imply affiliation, sponsorship, or endorsement. No part of this document may be reproduced, transmitted or transcribed without the express written permission of Leviton Manufacturing Co., Inc.

16

Connect to a Matter Controller (optional)

- Make sure the device is in Setup Mode (Status LED should be blinking GREEN). If the Status LED is not blinking GREEN, see page 15 for instructions on how to put the device into setup mode.
- Using a mobile device, open the Matter Controller's app and select "Add Accessory" or "Add Device".
- Locate and scan the Matter Setup code on the device or on the front page of this Getting Started Guide. If your device has already been enrolled to My Leviton, you can retrieve the Matter Setup code at any time under "Device Settings" in the My Leviton app.
- Follow the instructions in the Matter Controller's app to complete the setup process and control your Decora Smart device using Matter.

If connecting to more than one Matter Controller:

- The Matter Setup Code on the first page of this manual, on the device, and in the My Leviton app can only be used for setup if the device is not already commissioned to a Matter controller.
- If the Status LED briefly blinks AMBER when the device is put into Setup Mode, the device is already commissioned to a Matter Controller.
- To add the device to additional Matter controllers, use the Matter controller's app the device is already connected with to generate a new single use Matter pairing code.
- To delete all Matter connections, factory default the device (see page 16). The Matter Setup Code on the first page of the manual, on the device, and in the My Leviton app can now be used again for commissioning.

13

Connect to My Leviton partners (optional)

Visit my.leviton.com for a complete list of compatible smart home products and services.

- Tap the menu icon, select Integrations. Locate the desired service, select it, and follow instructions.



Status LED

COLOR	ACTIVITY	STATUS
Green	Flashes	In Setup Mode and ready to be added to a Wi-Fi network.
Green	Slow Blink	Connecting to a Wi-Fi network on power up.
Green or Off	Solid	Normal operation, can be configured in Setup Mode.
Amber	Slow Blink	Device is not connected to the Wi-Fi network, but attempting to reconnect.
Green/Amber	Alternating Blink	Device is in wireless Anywhere Companion Pairing Mode.
Red	Blinks	Wireless Anywhere Companion devices have unpaired or at max number of paired devices.
Green/Red/Amber	Alternating Blink	Identify feature triggered from the My Leviton app.

Visit My.Leviton.com and select the "Support" option for additional diagnostic assistance.

14

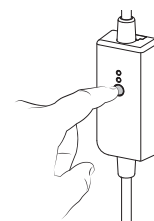
Diagnostic LED

If your device is not connecting to the My Leviton app, the Status LED can be used as a diagnostic tool. Press the button for at least 2 seconds (but no more than 7 seconds), and then release. The status LED blinks a diagnostic code for 2 seconds.

COLOR	STATUS
Amber	Not connected to Wi-Fi.
Red	Connected to Wi-Fi, but not able to connect to the My Leviton cloud.
Green/Amber, Alternating	Connected to Wi-Fi and My Leviton cloud, but unable to set the time from the internet.
Green	Connected to Wi-Fi and My Leviton cloud is working properly.

Setup mode

- Hold the control button for 7 seconds.
- After the first 7 seconds the status light changes to Amber. Release the control button.
- When the status LED flashes Green, you are in the Setup Mode.



15

Factory default reset

- Hold control button for 14 seconds.
- After the first 7 seconds, the status LED turns Amber. Continue to hold.
- After 7 more seconds, the LED quickly flashes Red and Amber.
- Release control button and the device resets.

What to do if...

Your Outdoor Plug-In Switch is not performing as expected:

- Make sure the plug-in is being supplied from a non-switched 120VAC, 60Hz source ONLY.
- Make sure the lights or load you are controlling is working (local switch is ON).
- Make sure the lights or load you are controlling does not exceed the rated limit.

Not connected to Wi-Fi:

- Make sure your Outdoor Plug-In Switch has a Wi-Fi signal and is within range of an available Wi-Fi access point.
- If your device is enrolled in the My Leviton app, select "Device Settings", and select "Device Health" to see the current Wi-Fi signal strength.
- If signal is weak, move the device closer to an available Wi-Fi access point or add an additional access point to increase your home's Wi-Fi network coverage.
- Make sure your Outdoor Plug-In Switch is not installed inside of a metal enclosure.
- Alternatively, in the My Leviton app, select "Device Settings", and select "Reconfigure Wireless"; follow the prompts to reconfigure your device and update the Wi-Fi settings.

16