



Improve Home Safety with AFCIs and GFCIs

In 2011, an estimated **47,700** home fires reported to U.S. fire departments involved an electrical failure/malfunction contributing to ignition.

RESULTS:

418

civilian deaths

Wiring and related equipment accounted for the largest share (63%) of these fires involving electrical distribution or lighting equipment



1,570

civilian injuries

Home electrical distribution or lighting equipment fires declined by about one-third from 1980 to 1998.*



\$1.4 billion

in direct property damage

In 2007-2011, home electrical fires represented **13%** of total home structure fires*

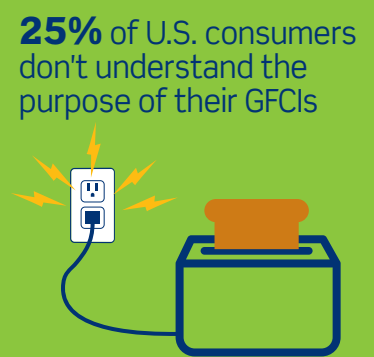


Electrical Safety Foundation International (ESFi) Findings:



25%

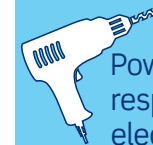
Over 25% of consumers don't know that GFCIs can help prevent electrocution



25% of U.S. consumers don't understand the purpose of their GFCIs

50%

of U.S. families never test their GFCIs; among those who do, none follow safety recommendations — **at least** once a month and after storms



Power tools were responsible for **9%** of electrocutions per year



Landscaping/gardening equipment were responsible for **7%**